



CHURCHILL HOUSE

summer

vacation courses

8-12, 10-14 and 14-17 years old

2012



CHURCHILL HOUSE

live & learn

WHY CHOOSE CHURCHILL HOUSE?

- **All year round school**
Established in 1971.
- **Multinational classes**
Students from 40 different countries learning in a truly international environment.
- **Themed project work**
Innovative, challenging and motivating group, pair and individual lessons which include the areas of speaking, reading, listening and writing.
- **Rosetta Stone:**
Interactive English language course and English in Action.
- **Experienced and well trained staff**
Teachers closely monitor a student's progress throughout the course to ensure a student is in the correct level for their abilities.
- **Educational and exciting excursion and activity programme**
Designed to improve students' level of fluency, to raise their confidence levels and, of course, to be interesting and fun.
- **Quality centres**
Based in picturesque landscaped grounds with rich heritage and with lots of historical ambience.
- **Exceptional student care**
Ratio of 1 member of staff to every 10 students and around the clock supervision. The centres also have two first-aid trained staff available at all times.
- **Residential Centres and Homestay accommodation**
Students have a choice of staying with a family in their home or at the residential accommodation within the centre.



CONTENTS

Why Choose Churchill House.....	2
English Programme.....	4
Accommodation.....	5
Activities.....	6
Centres.....	7
Ramsgate.....	8
Welcome.....	12
Family Language Programmes.....	13
FAQs, Travel and Insurance, Enrolment & Other useful information.....	14

WHICH CHURCHILL HOUSE CENTRE?

Choose between 11 beautiful centres located in Kent, Nottingham, Sussex, Surrey, Hertfordshire, London, Somerset and Yorkshire.

Which ever you choose Churchill House will be happy to welcome you.



CHURCHILL HOUSE

Churchill House is accredited by the British Council and a member of Quality English and the Education UK Partnership.



our centres



Ampleforth College - York
 The best centre for independent students who want to try a variety of sports and activities as well as an excellent standard of accommodation in a truly spectacular setting.
 Residential (10-17 years)
 30 minutes to York
 120 minutes by train to London

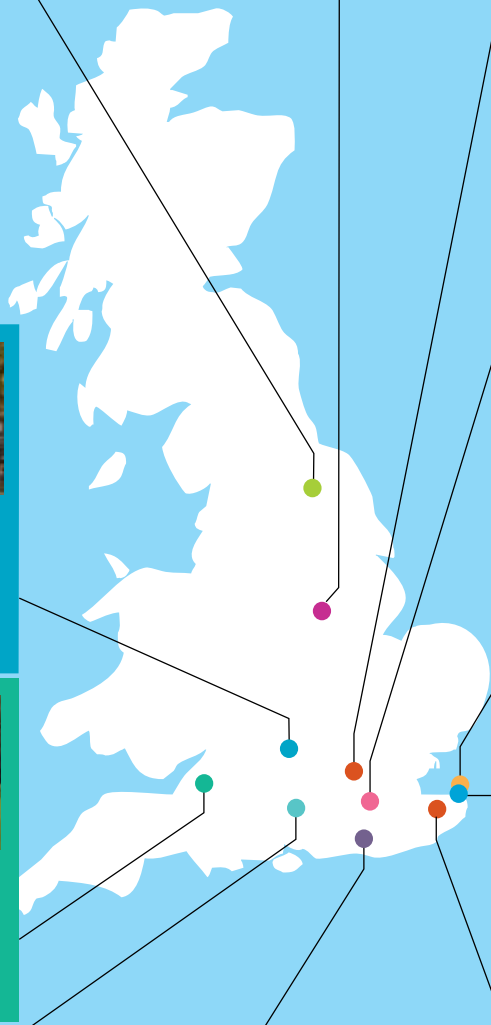


Trent College - Nottingham
 The best centre for those students who want easy access to town and amenities.
 Residential (10-17 years)
 Homestay (12-17 years)
 90 minutes by train to London



Aldenham - London
 The best centre for students who enjoy an old English school (1597) and want a London location. With easy access to world famous museums and attractions.
 Residential (11-17 years)
 30 minutes to Central London

Churchill House - a vacation course for everyone



Royal Russell - London
 The best centre for students who want to study in a traditional English private school with outstanding sports facilities yet want to have easy access to the centre of London.
 Residential (10-17 years)
 30 minutes to London



St. Benet's Hall - Oxford
 The best centre for girls looking to experience an exclusive introduction to British life. Limited numbers, Oxford city centre location and an excellent teaching and activity programme ensures that this centre will be full very quickly.
 Residential (12-15 years GIRLS ONLY)
 60 minutes to London



St Lawrence College - Ramsgate
 The best centre for students who want to study at a college with excellent new sporting facilities and very close to the sea with miles of golden sandy beaches.
 Residential (10-17 years)
 Homestay (12-17 years)
 80 minutes to London by fast train



Prior Park - Bath
 The best centre for those students who want to be immersed in a world famous historical setting. Close to the centre of town.
 Residential (10-17 years)
 Homestay (12-17 years)
 90 minutes from London



Churchill House - Ramsgate
 The best centre for independent students who want to enjoy Homestay Accommodation by the sea with miles of golden sandy beaches.
 Homestay (12-17 years)
 80 minutes to London by fast train



Frensham Heights - Surrey
 The best centre for those adventurous students who want to experience a variety of sports including high ropes course and archery. With easy access to London.
 Residential (11-17 years)
 Homestay (12-17 years)
 40 minutes to London



Ardingly College - Sussex
 The best Centre for those students who want to study at a college with excellent facilities in an area of outstanding natural beauty. Close to all main southern airports and London and Brighton.
 Residential (10-13 years and 13-16 years)
 40 minutes to London by train
 15 minutes to Brighton by train



Junior King's School - Canterbury
 The best Centre for young students who want to study in a beautiful English Junior College with a great variety of excellent facilities. Close to the centre of historic Canterbury and in a beautiful safe environment.
 Residential (8-12 years)
 70 minutes to central London by fast train

teaching

TEACHING PROGRAMME

At Churchill House our Summer English Courses are designed to improve a student's level of fluency, to raise their confidence levels and, of course, to be interesting and fun. A student can choose between 2, 3 and 4 week courses (or longer) with starting dates throughout the summer.

Our aim is always to make the student's stay with us worthwhile and enjoyable. Our teachers are professional and enthusiastic, helping the student to learn as much useful English as possible. Each summer we welcome students from over 40 different countries, so a student can learn in truly international surroundings.

Classes are small allowing more one on one attention (average 13 maximum 15) and cover a wide range of levels of English. All students are tested on arrival and teachers closely monitor his or her progress throughout their stay to ensure the correct level of ability is maintained. Our lessons motivate the student by using a wide range of language activities designed to improve his or her ability to communicate fluently.



ALL OUR ENGLISH COURSES INCLUDE:

- Small class sizes – average 13, maximum 15 per class
- 15 hours (20 Lessons) of English tuition per week
- Individual attention to students' needs
- Motivated and professional teachers
- Modern and varied teaching techniques
- Rosetta Stone is available at Ramsgate, Ampleforth and Prior Park
- Project work includes group and pair work
- Excursion preparation
- An end-of-course achievement certificate
- Individual student progress report
- A junior handbook and embossed folder for each student



All Churchill House lessons are based on specially designed weekly programmes. Each week's work includes a balance of language learning skills and practice at four different levels. The main emphasis of the lessons is to encourage the students to activate their spoken English through communicative tasks and exercises. Our teaching staff ensure that the lessons stretch the students abilities but are also fun, interesting and active:

In addition, lessons at our Residential Centres include the following:-

- Excursion preparation lessons, where the teacher will employ a variety of activities to learn about the places which students will visit as part of the weekly social programme. At Ramsgate, preparation for excursions may also be included where this is appropriate to the class.
- Project and cultural lessons: organised in weekly themes which include: world cultures, the future, the media, fashion, lifestyles, music, the arts, family and friendships. These themed lessons build over the week towards the creation and completion of a real task; for example the production of newspaper and magazine articles, diaries, surveys, films, plays and sketches. Students take this work home to show their school teachers and parents to remember their stay with us.
- Internet lessons, where students will research language and materials which they will use in creating their projects.

ROSETTA STONE INTERACTIVE LANGUAGE PROGRAMME

In addition to attending 15 hours English language lessons per week, students at Ampleforth College and Prior Park College will have two lessons using Rosetta Stone, an English language software programme which uses a dynamic immersion method reinforcing a student's own natural language learning skill with an award winning instructional technology. It motivates and builds confidence and a student will be aware of his or her progress at all times. This programme has been used by the Peace Corps, the United Nations, the European Union and NASA. Students will be allowed to have additional time each week to use this programme, if they so wish.

SUMMER VACATION COURSES



ACCOMMODATION

HOMESTAY BE PART OF A FAMILY

Churchill House has been providing homestay accommodation for over forty years and understands the importance of a safe and friendly environment for our students. Homestay gives students the opportunity to experience the English way of life at first hand and to practice English outside the classroom. All families providing Homestay accommodation are carefully selected by our experienced accommodation managers and are revisited every year. Our families do everything they can to welcome students to their friendly homes and to make their stay happy and successful. Students can choose a shared or single room – shared is with a student of a different nationality so they can speak English together.



RESIDENTIAL STAY ON CAMPUS

Churchill House residential summer vacation courses take place in prestigious English private schools. Students who choose residential accommodation will be placed in single, twin or multi-bedded accommodation. The residential accommodation at all our centres is of a high standard with modern facilities. All meals are in the schools' dining rooms with a choice of menu including a vegetarian option and healthy salads. Drinks and snacks are also available at break times. Girls and boys sleep in separate accommodation and are supervised by Churchill House staff at all times. All accommodation is comfortable, clean and normally includes storage and study facilities. Students' welfare and enjoyment are of prime importance and the Resident Centre Manager is always there to help, supported by a Director of Studies and Activities Manager as well as a team of experienced resident staff providing 24 hour assistance. Living in a residence gives students the opportunity to mix with other international students from all over the world. Many of our students return year after year making life long friendships. Daily classes, activities and excursions are always expertly supervised.

Homestay is available at Farnham, Bath, Nottingham and Ramsgate. Homestay is a safe and enriching way to learn English. Families provide breakfast each day and all evening meals during the week and at the weekend. Homestay students have their activities and excursions with the residential students. The families also provide a weekly personal laundry. Many families are within 30 minutes walk of the centre. If not, the price allows for a free bus pass or free taxi service or for the family to transport the student to and from the centre.

WELFARE

The welfare of our homestay and residential students is our prime concern, from the moment they arrive in the UK until they return home. To ensure that our students are safe, happy and cared for during their stay we have a ratio of 1 member of staff to every 10 students to provide full and attentive supervision. The centres have two first-aid trained staff available at all times. There is also a doctor's surgery near each centre.



activities

ACTIVITY PROGRAMME

At Churchill House we want students to learn a substantial amount of English as well as have a really enjoyable summer holiday. So we provide a wonderful variety of activities, sports and excursions to make students' leisure time as interesting as possible. Our Activity Programmes provide great opportunities to have fun and socialise with students from around the world and are led by our experienced and dedicated teams of Activity Organisers. The Activity Programmes at each centre includes a selection from those shown. Programmes include sporting and non-sporting activities for all.



TYPICAL ACTIVITIES

Daytime activities may include:

- | | | |
|--------------|----------------|--------------------|
| ■ Tennis | ■ Golf | ■ Climbing |
| ■ Football | ■ Drama | ■ Workout |
| ■ Basketball | ■ Beach trip | ■ Cycling |
| ■ Swimming | ■ Dance | ■ Pottery/Ceramics |
| ■ Volleyball | ■ Art | ■ Orienteering |
| ■ Yoga | ■ Photography | ■ Craft |
| ■ Cooking | ■ Nature walks | ■ Jewellery making |

Evening activities may include:

- | | |
|---------------------|-----------------------------|
| ■ Cabaret | ■ International party night |
| ■ Disco | ■ Barbecue |
| ■ Karaoke | ■ Cinema visit |
| ■ Quiz night | ■ Bingo |
| ■ Fancy dress party | ■ Blind Date |

AT LEAST TWO EXCURSIONS

Two excursions are included in the programme each week and every excursion includes entry/guide where applicable and there is always free time for shopping or sightseeing. Depending on your centre, destinations can include:

- | | | |
|---|--------------|-----------------|
| ■ London | ■ Brighton | ■ Oxford |
| ■ London boat trip | ■ Canterbury | ■ Scarborough |
| ■ Cambridge | ■ York | ■ Leeds Castle |
| ■ Dover Castle | ■ Bath | ■ Lake District |
| ■ Manchester with Manchester United Football Stadium Tour | | |
| ■ Stratford-upon-Avon | | |

In addition, each centre has a weekly optional excursion to a major attraction. These are not included in the course price, but can be paid for once the students have arrived at their chosen centre (See *website for prices*).

- | | | |
|---------------------|------------------|----------------|
| ■ Bath & Stonehenge | ■ Thorpe Park | ■ Alton Towers |
| ■ Leeds Castle | ■ Windsor & Eton | |

OPTIONAL MULTI-DAY TOURS

It is also possible to book one of our British or European multi-day tours which visit some of the most interesting European cities. Tours are arranged at various times throughout the summer and include:

- 3 day tour of Paris
 - 3 day tour of Scotland
 - London Weekends
- (See *website for prices*).





RESIDENTIAL Weekly Theme: Future & the Media

SUNDAY	MONDAY	TUESDAY	WEDNESDAY	THURSDAY	FRIDAY	SATURDAY	
Arrivals Departures	Breakfast 8.00 - 8.45						
	Classes 9.00 - 10.00						
	Classes 10.15 - 11.15						
Sports Tournaments Trophies for the winning teams	Introduction lesson 12-13.00	Excursion lesson 12-13.00	Classes 11.30 - 12.30			Day trip to The Lake District 09.00 -19.30	
	Lunch 12.30 - 13.15						
	Interactive English						
* Optional Trips Flamingo Land £30	Sports or Art Workshop 14:30-17:00	Sports or Dance Class or York Shopping Trip* 14:30-17:00	Medieval City York 14:30-17:00	Rocket Building Competition 14:30-17:00	Preparation for Fashion Show 14:30-17:00		
Interactive English							
Quiet time 17.30							
Dinner 18.30 - 19.15							
Film Evening 19:30-22:00	Welcome party 20:00-22:00	On site Barbecue	Film Quiz 20:00-22:00	Future Disco 20:00-22:00	Future Fashion Show 20:00-22:00	Evening Activity 20:00-22:00	
In dormitory 22.00 Lights out 22.30							

MAIN ATTRACTIONS

Churchill House - Ramsgate

Miles of golden sandy beaches with excursions to London, Oxford and Cambridge.

Junior King's School - Canterbury

Set in a safe huge area of beautiful gardens with great sport facilities, near Canterbury. Trips include London, Cambridge and Oxford with the Christ Church College Dining hall which appeared in many of the Harry Potter films.

Ardingly College - Sussex

Excellent facilities and set in 400 acres of woodland in an area of outstanding natural beauty on Sussex Downs. Easy access to both London and Brighton.

St. Lawrence College - Ramsgate

The centre is set in a great location with excellent facilities. It is very close to several sandy Blue Flag beaches and only 80 minutes to central London.

Ampleforth College - York

Set in the natural beauty of the Yorkshire Moors, close to York with its Roman and Medieval history. Trips include London, Manchester & Manchester United football stadium and the Lake District.

Trent College - Nottingham

Set in Robin Hood Country close to the centre of Nottingham. Main excursions include London, Warwick Castle, Oxford and the National Space Centre.

Aldenham - London

The nearest centre to London but still located in over 100 acres of parkland. Trips include London, Oxford and Cambridge.

Royal Russell - London

Set in acres of woodland in an area of outstanding natural beauty yet only minutes from central Croydon with very easy access to the middle of London. Excellent sports facilities and newly renovated dining hall. Trips include Oxford, Windsor and Brighton.

Frensham Heights - Surrey

A countryside location, close to Farnham and with easy access to London. Adventurous students can challenge themselves with the high ropes course & archery. Trips include London, Brighton, Windsor and Cambridge.

Prior Park College - Bath

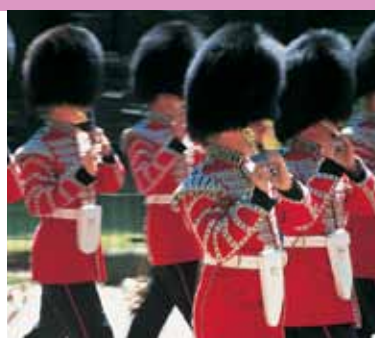
Situated in the world heritage site of Bath Spa with its Roman Baths and Georgian architecture. Trips will include London, Oxford and Stonehenge & Salisbury.

St. Benet's Hall - Oxford

This exclusive girls only vacation course is set in St Benet's Hall, a handsome Georgian house, very close to the centre of historic Oxford. Providing easy access to London, Cambridge and main airports.

HOMESTAY Weekly Theme: Supernatural and Crime

SUNDAY	MONDAY	TUESDAY	WEDNESDAY	THURSDAY	FRIDAY	SATURDAY	
Arrivals Departures	Breakfast 8.00 - 8.45						
	Classes 9.00 - 10.00						
	Classes 10.15 - 11.15						
Day with host family or Optional extra Alton Towers	Introduction lesson 12-13.00	Excursion lesson 12-13.00	Classes 11.30 - 12.30			Day trip to Oxford 08.00 -20.00	
	Lunch 12.30 - 13.15						
	Interactive English						
	Sports or Art Workshop 14:30-17:00	Sports or Dance Class 14:30-17:00	London & Natural History Museum 13-20:00	Sports or Drama 14:30-17:00	Preparation for Murder Mystery Night 14:30-17:00		
Quiet time 17.30							
Dinner 18.30 - 19.15							
Evening with Host Family	Evening with Host Family	On site Barbecue	Evening with Host Family	Evening with Host Family	Murder Mystery Night 20:00-22:00	Evening with Host Family	



RAMSGATE

Churchill House Ramsgate has been running English Courses for students of all ages for over 40 years. The School is open throughout the year, so our summer vacation students benefit from the experience of our full time teaching staff. Our courses are truly multinational – in summer students arrive from over 40 different countries. As one of the largest independent language schools in England we are able to offer a wide range of courses and class levels. There are starting dates throughout the summer with courses lasting 2 to 9 weeks.



FACILITIES

- Internet Café
- Language Lab
- Individual Learning Lab
- Social Club
- Clubroom
- Tennis courts
- Wifi
- Full range of sports equipment

LOCAL AMENITIES

- Sports + Leisure Centre
- Swimming pool
- Cinema
- Shopping centre
- High speed to London
- Sailing + diving school
- Ferry Links to Continent
- Local Airport
- Local Beach
- World famous golf course



Ramsgate Beach

THE LOCATION

Situated in a 19th century square overlooking the sea, the school is within easy walking distance of the town centre. Ramsgate is a picturesque seaside town on the south coast of England, with a long sandy beach and attractive Royal Harbour. One of the sunniest places in the UK, Ramsgate is the ideal location for a summer vacation course. It is a small, safe and peaceful place to study away from the noise and pollution of a big city. Close to historic town of Sandwich and world famous city of Canterbury. Ramsgate is only 75 minutes away from London on the regular high speed train and offers great connections to all London airports.



ACCOMMODATION

RAMSGATE and BIRCHINGTON-ON-SEA

In Ramsgate we offer homestay accommodation to our students as standard. Many of our families who look after our Year-Round students also welcome those on summer vacation courses. They understand how to make a student's stay as enjoyable as possible and this plays an important part in ensuring that all our homestay students have a wonderful summer. Most Ramsgate families are within easy walking distance of the school and our younger students are normally placed within 10 or 15 minutes of the school.

We also have families in the village of Birchington-on-Sea. Students travel the short distance to and from the school by school bus, organised by Churchill House. All families are within easy reach of some of East Kent's fabulous beaches and bays – such as Minnis Bay, a long rural countryside bay with a sandy beach with rocky and shingle areas, popular with families. Some evening activities are organised locally.

Students can choose a shared or single - shared is with a student of a different nationality so they speak English together.



Ramsgate



Churchill House, Paragon Building

FOOD

Our host families provide breakfast and evening meals and those students who have elected to have full board (compulsory for students 15 and under) are provided with a hot meal at mid-day by Churchill House except on excursion days when a packed lunch is provided. At weekends all meals are provided by the host family. Mid-day meals are normally served in the clubroom where a choice of good healthy food is offered from the cold 'deli' and hot buffet counters.



Minnis Bay

summer scho

RAMSGATE



SOCIAL CLUB

Our experienced Social Club team is skilled in organising leisure activities that encourage students to learn English by experiencing an exciting and enriching leisure programme. The school is unique among language schools in owning its own pub. The Churchill Tavern has its own private club, 'The Clubroom', open to all students 16 years and over. Our younger junior students have their own clubrooms in Ramsgate and Birchington. For all students, their first experience will be a 'Welcome Party' on arrival. They will be able to mix with other students at our Karaoke, Cabaret and Quiz evenings. We place great importance on providing them with a varied and well organised weekly activity programme. Whatever students' interests, their requirements, or their questions, the Social Club is here for them – ready to help and make the most of their time at Churchill House. Staff members will organise travel passes, excursions, multi-day tours, theatre and cinema tickets, taxis and much more.



THE ISLE OF THANET

Situated on the south-eastern tip of Kent, the Isle of Thanet covers an area of approximately 80 square kilometres and has quick easy access from London and continental Europe. The main seaside resorts are Ramsgate, Broadstairs and Margate and each has its own distinct character, attractions and charm. The pretty villages of Acol, Birchington, Minster, Sarre, St Nicholas-at-Wade and Westgate provide additional areas of historical interest and outstanding natural beauty. With above average sunshine levels and 26 miles of golden sandy beaches there is much to explore, experience and enjoy.



SUMMER VACATION COURSES

RAMSGATE HOMESTAY 2 Week Activity Programme

Week1

SUNDAY	MONDAY	TUESDAY	WEDNESDAY	THURSDAY	FRIDAY	SATURDAY	
Morning Class							
See Time-table for details							
ARRIVAL							
	Orientation Walk of Ramsgate Our guide will take you for a walk around Ramsgate, highlighting meeting points, places of interest etc. 14:30-17:00	Sports 14.45-17:00 or Dance Class 14.45-17:00	DOVER CASTLE Meet at Royal Esplanade 13:45-18:00	Sports 14.45-17:00 or Drama Class 14.45-17:00	Sports 14.45-17:00 or Shopping in Ramsgate Market 14:45-16:30	LONDON 8:00-20:00	
						Evening Free	
Welcome Party & Disco 19:00-21:30	Karaoke 19:00-21:30	& DISCO 19:00-21:30	Beach Party 19:00-21:30	Disco 19:00-22:00			



Viking Bay

Week2

SUNDAY	MONDAY	TUESDAY	WEDNESDAY	THURSDAY	FRIDAY	SATURDAY
Class						
See Time-table for details						
ARRIVAL						
	Sport 9:30-12:30	Sports 9:30-12:30 or Art Class 9.30 -12.30	CANTERBURY Meet at Royal Esplanade 8:30-13:15	Beach Day 9:30-12:30	Sports 9:30-12:30 or Shopping in Ramsgate Market 9:30-12:30	LONDON 8:00-20:00
Evening Free						Evening Free
	Welcome Disco 19:00-21:30	Italian Party 19:00-21:30	Games & Competition Evening 19:00-21:30	Blind Date & Disco 19:00-21:30	Disco 19:00-22:00	

SUMMER COURSES FOR ADULTS

In addition to these courses, we also run Summer Courses for adult students ages 18 to 70 plus. Accommodation is family homestay, self-catering or residential and there is a range of different activities and excursions. Please contact us for details and brochure.



welcome

A WELCOME FROM THE SUMMER CENTRE DIRECTOR



Welcome to Churchill House.
As Summer Centres Director, my first and foremost responsibility is to the students you send me.

I will do everything I can to ensure that their stay with us is safe and enjoyable and they learn as much English as possible. I am assisted in this by my excellent team of managers, teachers and activity leaders at each centre who motivate students to speak as much English as possible in a fun, exciting way. You have now had the opportunity to look at our range of centres and diverse programmes. Which ever one you choose you can be assured that I will always be available to assist in any way I can. I hope you decide to join us next Summer - welcome to Churchill House

Daren Liker
Summer Centre Director



FAMILY LANGUAGE PROGRAMMES

Learn English and have a family holiday at the same time. Adult, juniors and young learners have English lessons in the morning. We help you find family-friendly activities and venues for the afternoons and also introduce you to other families at the welcome party. We provide you with welcome packs which include maps, brochures and practical information. In addition, we provide you with educational materials for any venue that you visit. Accommodation is family homestay, residential or self-catering flats.



YEAR ROUND COURSES FOR SCHOOL GROUPS

Churchill House is open all year round and offers specialized English programmes for school, college or university groups between September and June.

Our courses are designed to suit your academic needs including exam preparation and we blend your academic requirements with a suitable activity programme.

Topics include tourism, social services, media studies and current affairs, catering, British culture, traditions and literature.

We have a broad range of topics to choose from, but we can also design a unique course

INFORMATION

TRANSFER SERVICE

All individual junior students must use our transfer service on arrival and departure unless they are being taken to the centre by a responsible adult. Individuals and groups using our transfer service will be greeted at the airport by a member of Churchill House staff and accompanied back to the airport on departure.

Full information available on request.

INSURANCE

All students, whether an individual or group student, must have insurance for the duration of their stay covering them for Medical Expenses, Course Cancellation, Personal Accident, Baggage & Personal Effects, Personal Money & Tickets, Personal Liability.

The Churchill House insurance scheme is designed for students of English language schools. Please contact us for full details and an application form.

ARRIVAL & DEPARTURE

For our Ramsgate centre, students should arrive on a Sunday and depart on a Saturday. Extra nights are possible at a supplement and by agreement. For all other centres arrivals and departures will be either Sunday or Wednesday.



HOW TO ENROL

For full details on how to book and pay for a course please contact us and we will send you all the necessary information and enrolment forms.

Visit www.churchillhouse.co.uk for further information about Churchill House, our Summer Schools and our year round programmes.

CHURCHILL HOUSE MAIN COURSES

Churchill house is open all year and is accredited by the British Council and a member of Quality English. We offer a wide range of courses of 2 to 50 weeks duration including courses in preparation for major examinations. There is a choice of 15, 20 or 25 hour lessons per week and an Elective Programme covering a wide range of specific subjects. We have an excellent Social Club with an interesting weekly programme of activities and trips and also multiday tours. Accommodation is family homestay or self-catering flats. Students aged from 16 to 70 plus are all welcome. Please ask for our brochure or see our website.

WEBSITE

More information and additional pictures of all our summer centres are available online by going to our website: www.churchillhouse.co.uk

SUMMER VACATION COURSES

summer school

frensham heights school

Frensham Heights is an imposing Edwardian Mansion house with glorious views across National Trust acres, woods and farm land, located just outside the quaint town of Farnham. The Charrington brewing family designed and built the house so they could entertain their many friends. In 1925, it became an established progressive school. The school now has an award winning performing arts centre, an exciting outdoor education facility which includes ropes, archery and a creative cookery room for students to enjoy.



FACILITIES

- Fully equipped classrooms
- Good standard of residential accommodation
- Outdoor swimming pool in picturesque gardens
- Large sports hall
- Tennis courts
- Playing field
- New performing arts theatre
- Dance studio
- Outdoor educational facilities
- New all weather sports pitch
- Comfortable student common rooms
- Sports fields



THE LOCATION

Frensham Heights is three miles from the beautiful Georgian market town of Farnham and fifteen miles from the historic city of Guildford. Easy access to the centre of London and less than one hour from Heathrow and Gatwick airport.

Football Coaching

Frensham Heights offers students the opportunity to experience Professional Football Coaching. Students train with a coach 5 hours each week.

Supplement payable for this programme (see website for prices).



summer school



FARNHAM HOMESTAY

Homestay students stay with English families in the local area. Some families are within 30 minutes walk of the centre. If not, the families transport their students to and from the centre. Families provide breakfast each day and all evening meals. Homestay provides students with the opportunity to experience the English way of life at first hand and to practice English outside the classroom - it is an enriching way to learn English.

AND MORE

Students will have the wonderful opportunity amongst other activities to experience a high ropes course, archery and cookery each week.

All students have access to a free Performing Arts Programme. The Performing Arts Programme allows students to experience all facets of putting on a play including writing, acting, costumes and stage set under the guidance of a professional teacher.

Group Leaders will receive two free English lessons and a social evening with staff each week.

EXCURSIONS:

- Brighton
- Natural History Museum, London
- Cambridge
- Windsor & Eton
- Thorpe Park*
- London with boat trip
- Oxford
- Winchester Cathedral
- Leeds Castle*
- Bath & Stonehenge*

* *Optional Extras (see website for details).*

ACTIVITIES:

- High Ropes course
- Cookery classes
- Arts and crafts
- Football
- Badminton
- Volleyball
- Pottery/Ceramics
- Craft
- Archery
- Drama workshop
- Photography
- Tennis
- Shopping
- Fashion show
- Orienteering
- Jewellery making

FOOD

All meals are provided in the modern dining room which overlooks exquisite, formal grounds. Students may choose from at least three main entrees including a vegetarian dish, jacket potatoes, pasta and salads as well as puddings and fruit. Drinks and snacks are available during break times.

ACCOMMODATION

At Frensham Heights residential students are accommodated in newly built and refurbished 1, 2, 3 bedded rooms in two houses each with its own common room and kitchen areas. Laundry is organised in each of the houses.



CHURCHILL HOUSE

Churchill House, Spencer Square, Ramsgate,
Kent, England CT11 9EQ

Tel: +44 (0) 1843 586833

Fax: +44 (0) 1843 584827

e-mail: welcome@churchillhouse.co.uk

web: www.churchillhouse.co.uk

summer school st. benet's hall

Residential: Girls Only – 12-15 years

Churchill House Oxford is situated in St Benet's Hall, founded in 1897 so that monks of Ampleforth Abbey could take degrees at Oxford University. In today's world it is principally a Hall of Studies for Oxford University students. St Benet's Hall is a handsome Georgian house which has recently been refurbished and redecorated, maintaining its fine Georgian dignity. This beautiful centre is situated in an 'oasis' of calm in the centre of historic Oxford. It provides the perfect setting for a girl's only vacation course ensuring the very best of everything – location, accommodation, teaching, activities. It allows students the opportunity to soak up the English way of life.



FACILITIES

- Very good standard of residential accommodation
- Single, twin and some multi-bedded rooms
- Student common room
- Historic library
- Well equipped classrooms
- Beautiful dining room
- Chapel with 18th century monastic organ



LOCATION

Oxford is a beautiful university city in the south of England, and is about 60 miles from London and very close to several major airports (only 40 miles to Heathrow). It is a small and safe city with a population of approximately 120,000. Oxford is famous as one of the oldest university cities in the world and the college buildings create a unique and beautiful atmosphere. But Oxford isn't only a centre of study; it's also a beautiful city of parks, open spaces and rivers, and offers a lively social life: there is always plenty to see and do. And because Oxford is so central, you are never too far from other interesting places: London, Stratford upon Avon, Stonehenge, Bath, Brighton and the Cotswold countryside are all less than 2 hours away.



SUMMER VACATION COURSES

summer school



View over Oxford colleges



AND MORE

In addition to attending 15 hours English Language lessons per week (20 lessons), young learners at St Benet's Hall will have an additional 4 hours intensive English Language lessons each week and three cultural afternoon activities.

EXCURSIONS:

- Oxford University
- Natural History Museum
- Punting on the river
- London
- Cambridge
- Windsor and Eton
- Bath & Stonehenge
- Cotswolds
- Blenheim Palace
- Warwick
- Stratford

ACTIVITIES:

- Photography
- Craft
- Nature walks
- Jewellery making
- Shopping
- Orienteering
- Landscape painting
- Drama
- Swimming
- Yoga
- Volleyball
- Tennis
- Haiku poetry workshop
- fashion classes

FOOD

All meals are provided by the college in their Refectory. St Benet's Hall retains the ancient practice of a common table for meals. The Refectory (itself an ancient monastic term to describe the dining hall) contains one long table spanning the length of the Hall. Up to fifty can dine together and enjoy the healthy food and unique atmosphere. All dietary needs can be catered for including vegetarian and halal.

ACCOMMODATION

St Benet's Hall offers accommodation in single, twin and multi-bedded rooms. We encourage students to mix with other nationalities in shared rooms and for younger students coming alone the multi-bedded rooms are the best way to make friends and have fun. Most of the bedrooms have ensuite or adjacent facilities and all rooms have spectacular views over Oxford and beyond. But most important, St Benet's Hall is renowned for its welcoming atmosphere and excellent cuisine. Children are supervised at all times.



CHURCHILL HOUSE

Churchill House, Spencer Square, Ramsgate,
Kent, England CT11 9EQ

Tel: +44 (0) 1843 586833

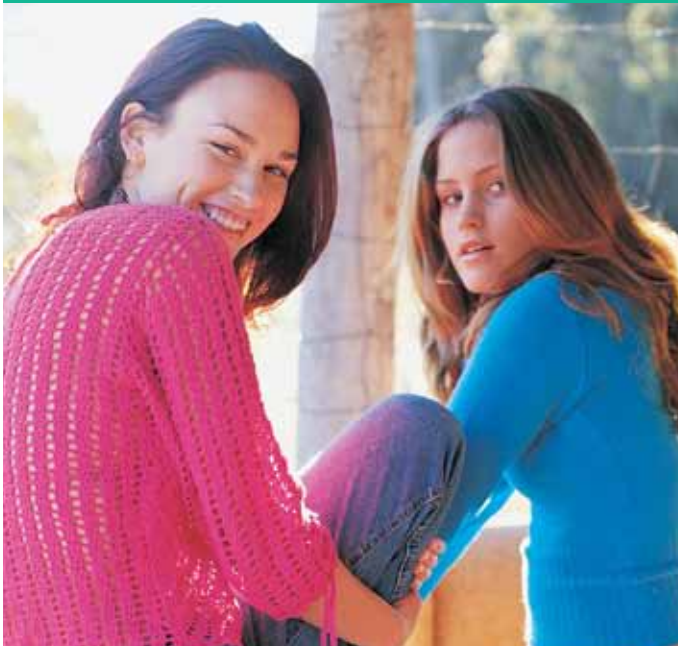
Fax: +44 (0) 1843 584827

e-mail: welcome@churchillhouse.co.uk

web: www.churchillhouse.co.uk

summer school prior park college

Designed in 1830 by the famous architect John Wood the Elder, this grand Palladian mansion was once the home of Ralph Allen, the entrepreneur who rebuilt Bath using the controversial Bath stone. The school sits upon picturesque landscaped grounds overlooking the famous World Heritage City of Bath with its renowned spa waters. The Roman style bridge, statues and ornate chapel only add to the historical ambience of this catholic college.



FACILITIES

- Wide open playing fields
- Tennis courts
- Cricket pitch
- A heated indoor swimming pool
- A sports hall
- An all weather astro turf pitch
- Ample common rooms
- Spacious theatre
- Comfortable classrooms



Rosetta Stone Programme

At this center we offer **2 FREE** lessons per week using Rosetta Stone an exciting interactive English language programme



THE LOCATION

Bath has a range of shops, restaurants and leisure facilities and provides very easy access to London by rail or bus, as well as the two major London airports – Gatwick is 2 hours and Heathrow is only 90 minutes away.

summer school



BATH HOMESTAY

Homestay students stay with English families in the local area. Many families are within 30 minutes walk of the centre. If not, we provide a FREE school bus pass or FREE taxi service to and from the centre. Families provide breakfast each day and all evening meals. Homestay provides students with the opportunity to experience the English way of life at first hand and to practice English outside the classroom - it is an enriching way to learn English.

AND MORE

In addition to attending 20 English language lessons per week, students at Prior Park College will have two lessons using Rosetta Stone, a state of the art interactive English language software programme which utilises voice recognition and corrects accents of all nationalities. Students can have additional time each week to use this programme, if they so wish.

Group Leaders will receive two free English lessons and a social evening with staff each week.

EXCURSIONS:

- London & British Museum
- Bath Abbey and Roman Baths
- Bristol Imaginarium
- Cheddar Gorge*
- Shakespeare's Birthplace & Stratford upon Avon
- Thermae Bath Spa*
- Oxford
- Stonehenge and Salisbury
- Longleat Animal Park
- Victoria Art Gallery, Bath
- Fashion museum, Bath
- Thorpe Park*

* Optional extra (see website for prices)

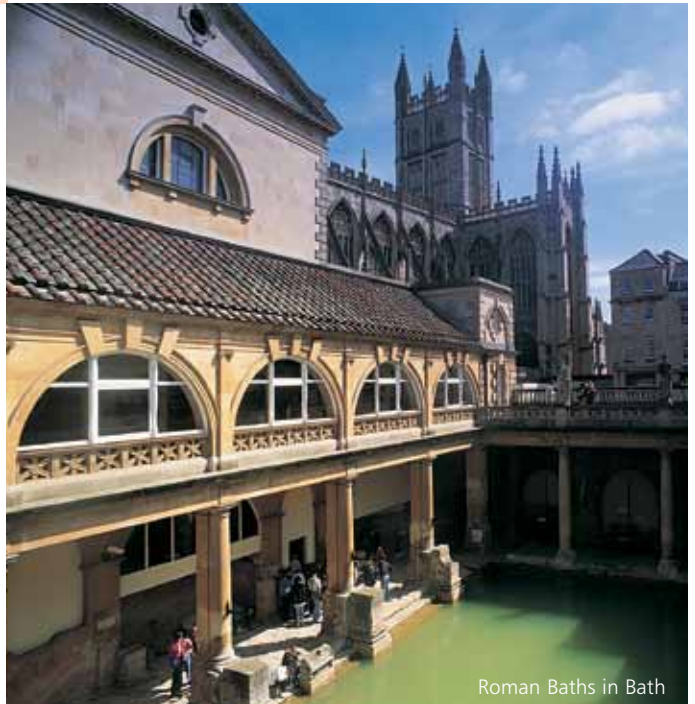
ACTIVITIES:

- Dance
- Arts and Crafts
- Football
- Badminton
- Volleyball
- Pottery/Ceramics
- Nature walks
- Drama
- Photography
- Tennis
- Shopping
- Fashion show
- Orienteering
- Jewellery making

FOOD

All meals are provided by the college in the artistic dining hall.

There is a wide variety on offer on the menu from traditional 'fish & chips' to pasta. The food is fresh and tasty and there is a wonderful salad bar too. We can cater for all dietary needs including vegetarian.



Roman Baths in Bath

ACCOMMODATION

A good standard of accommodation with separate houses for boys and girls. The rooms are mainly 2,3, 4 & 6 bedded rooms with some single rooms for older students and larger bedrooms for groups of friends. The boys' accommodation has been completely refurbished in the last two years. The girls' accommodation is very comfortable with three common rooms, a kitchen and a dining room.



CHURCHILL HOUSE

Churchill House, Spencer Square, Ramsgate,
Kent, England CT11 9EQ

Tel: +44 (0) 1843 586833

Fax: +44 (0) 1843 584827

e-mail: welcome@churchillhouse.co.uk

web: www.churchillhouse.co.uk

summer school trent college

Founded as a school in 1866, Trent College is situated on the border of Nottinghamshire and Derbyshire. It is a school with a rich heritage and tradition spanning 140 years. Trent has warm red brick buildings, an impressive new modern dining room and lovely landscaped grounds making this an ideal place to learn English. Within walking distance is the market town of Long Eaton which offers students the opportunity to soak up the English way of life.



FACILITIES

- Well equipped classrooms
- A very good standard of accommodation
- New modern dining room
- Playing fields
- Tennis courts
- Football pitches
- All weather astro turf pitch
- Indoor swimming pool
- Drama theatre
- Sports hall



LOCATION

Long Eaton is a friendly town a very short walking distance from Trent College. It has a variety of shops, restaurants and recreational facilities and provides very easy access to London by bus or rail (100 minutes) as well as the major London airports- Heathrow is 2 hours away. Manchester Airport is less than 2 hours away and has hundreds of cheap flights from all over Europe and beyond. Our transfer service from Manchester is easy and economical. East Midlands Airport is only 30 minutes away.

Amazing Adventures at Trent College

Trent College also offers students the opportunity to experience an additional Amazing Adventures package during their stay. Activities are selected from archery, mountain biking, pot holing, abseiling, roller skating, horse riding, high ropes, ice skating, sailing and dry-slope skiing. 3 activities per week plus 2 from the normal programme.

There is a supplement for this exciting programme (see website for prices).

summer school



NOTTINGHAM HOMESTAY

Homestay students stay with English families in the local area. Many families are within 30 minutes walk of the centre. If not, we provide a FREE school bus pass or FREE taxi service to and from the centre. Families provide breakfast each day and all evening meals. Homestay provides students with the opportunity to experience the English way of life at first hand and to practice English outside the classroom - it is an enriching way to learn English.

AND MORE

The school's location in the centre of the country makes it ideal for visiting some of the most exciting and cultural places in England, including the National Space Centre, Robin Hood Country and a variety of different theme parks.

Group Leaders will have two free English lessons and a social evening with staff on a weekly basis.



EXCURSIONS:

- | | |
|---------------------------|---|
| ■ London & British Museum | ■ Oxford |
| ■ Cambridge | ■ Warwick Castle |
| ■ Nottingham | ■ Robin Hood Country & Sherwood Forest |
| ■ National Space Centre* | ■ Tamworth Snow Dome* |
| ■ Alton Towers* | ■ Birmingham & Cadbury chocolate factory* |
| ■ York* | |
| ■ Wollaton Hall | |

* *Optional Extras (see website for prices)*

ACTIVITIES:

- | | |
|--------------------|-------------------|
| ■ Drama | ■ Dance |
| ■ Football | ■ Arts and Crafts |
| ■ Craft | ■ Tennis |
| ■ Badminton | ■ Shopping |
| ■ Volleyball | ■ Fashion show |
| ■ Pottery/Ceramics | ■ Orienteering |
| ■ Photography | ■ Nature walks |
| ■ Jewellery making | |

FOOD

All meals are provided by the college in their brand new modern dining hall. There is a wide variety menu from shepherd's pie to pasta and salads, fruit and puddings. The food is flavourful, healthy and all dietary needs can be catered for including vegetarian.

ACCOMMODATION

Trent College has four accommodation blocks separated into girls and boys houses. All rooms are modern and furnished as study bedrooms. We encourage students to mix with other nationalities in shared rooms and for younger students coming alone, the 2 and 3 bedded rooms are the best way to make friends and have fun.



National Space Centre



CHURCHILL HOUSE

Churchill House, Spencer Square, Ramsgate,
Kent, England CT11 9EQ

Tel: +44 (0) 1843 586833

Fax: +44 (0) 1843 584827

e-mail: welcome@churchillhouse.co.uk

web: www.churchillhouse.co.uk

summer school

st. Lawrence college

St. Lawrence was founded in 1879, known as South Eastern College. The school rapidly outgrew the single house, leading to the main Victorian building of the present day college by 1884. The chapel was completed in 1927. St. Lawrence College is situated in Ramsgate, close to several golden sand Blue Flag beaches and within walking distance of Charles Dickens' Broadstairs. It is a safe and secure campus, with 19 hectares of beautiful grounds and sports fields.



FACILITIES

- Well equipped classrooms
- Cricket pitch
- Football pitch
- Billiard and table tennis
- Large auditorium
- Swimming pool
- Tennis court
- Fitness hall
- Hockey pitch
- Good standard of residential accommodation

LOCAL AMENITIES

- Surfing
- Cinema
- Bowling
- Horse riding

THE LOCATION

St. Lawrence College is located in Ramsgate, a beautiful and historic seaside town with approximately 50,000 inhabitants. This area is known as the Isle of Thanet, in the county of Kent (known as 'The Garden of England'). Ramsgate boasts some fine architecture dating from the Regency period, when it prospered first as an army town. Its Royal Harbour is one of the finest on the South Coast. Since Victorian times, it has been a resort town, visited by many tourists every summer. Ramsgate has been the home of many famous artists, writers and thinkers: Van Gogh, Turner, Augustus Pugin, Charles Dickens and Samuel Taylor Coleridge – to name only a few! Close to historic towns of Canterbury and Sandwich and only 80 minutes away from London by fast train and its major airports.



Canterbury Cathedral



SUMMER VACATION COURSES

summer school



BIRCHINGTON HOMESTAY

Birchington is a village by the sea about 10km from Ramsgate, Kent. All families are within easy reach of some of the area's fabulous beaches and bays. Lessons and activities are at St Lawrence College and students travel to and from the College on our special coach free of charge. Students all have lunch at the College Monday to Friday and dinner on the two evenings that they have activities. Other evenings are spent with the family. Altogether this is an enriching experience and an ideal way to experience the English way of life.

AND MORE

St. Lawrence offers a great opportunity to learn English with the whole family in Ramsgate. Whilst the children are studying and having fun at St. Lawrence College, the parents can stay in a host family, studying in the main school. Kids and parents can spend the weekends together.

Group Leaders will receive two free English lessons and a social evening with staff each week.



EXCURSIONS:

- Brighton
- Cambridge
- Thorpe Park*
- Oxford
- Leeds Castle*
- Natural History Museum, London
- Windsor & Eton
- London with boat trip
- Portsmouth
- Bath & Stonehenge*

* *Optional extra (see website for prices)*

ACTIVITIES:

- Football
- Volleyball
- Tennis
- Drama workshop
- Shopping
- Pottery/Ceramics
- Photography
- Nature walks
- Badminton
- Hockey
- Cricket
- Arts & Crafts
- Fashion show
- Orienteering
- Craft
- Jewellery making

FOOD

All meals are provided in the dining hall in the beautiful and traditional English College dining room. Students may choose from at least three main entrees including a vegetarian dish, jacket potatoes, pasta and salads as well as puddings and fruits. Drinks and snacks are available during break times.

ACCOMMODATION

St Lawrence College offers accommodation in single, twin and multi-bedded rooms. We encourage students to mix with other nationalities in shared rooms and for younger students coming alone the multi-bedded rooms are the best way to make friends and have fun. Children are supervised at all times.



CHURCHILL HOUSE

Churchill House, Spencer Square, Ramsgate,
Kent, England CT11 9EQ

Tel: +44 (0) 1843 586833
Fax: +44 (0) 1843 584827

e-mail: welcome@churchillhouse.co.uk
web: www.churchillhouse.co.uk

summer school royal russell school

Royal Russell is a traditional English boarding school set in acres of woodland in an area of outstanding natural beauty. Her Majesty the Queen is the patron of the school and she has visited the school on a number of occasions. It is situated in an 'oasis' of green and yet is only minutes from central Croydon with very easy access to central London and its world famous attractions. With spacious playing fields and a university style campus atmosphere the school provides a wonderful environment for a summer vacation English language course.



FACILITIES

- Good standard of residential accommodation
- Single, twin and some multi-bedded rooms
- Swimming Pool Complex
- Large Sports Hall and Fitness Gym
- Basketball Courts
- Tennis Courts
- Football Pitches
- Student email and internet facilities
- Student common rooms



THE LONDON EXPERIENCE

At Royal Russell School, students can choose to be immersed in the London scene. Museums, walks, workshops, evening coach tours, art galleries and experiences in London are available in addition to the normal programme. Three afternoons and one evening are spent in London on Monday to Friday with a full day excursion out of London at the weekend.

Supplement payable for this programme (see website for prices).



Tower bridge

THE LOCATION

Croydon has a range of shops, restaurants and leisure facilities and provides very easy access to London by rail or bus, as well as the two major London airports – Gatwick (30 minutes) and Heathrow (60 minutes).

SUMMER VACATION COURSES

summer school



Houses of Parliament



AND MORE

The school's proximity to London makes it the perfect location for those wishing to spend time in the country's capital including the Big Red Bus Tour to see London by night. In addition to the excursions of the standard weekly activity programme, additional excursions into London are easily arranged to see some of the City's many attractions.

EXCURSIONS:

- London with boat trip
- Oxford, Windsor Castle
- Brighton
- British Museum
- Cambridge with punting
- Canterbury Cathedral
- Natural History Museum

ACTIVITIES:

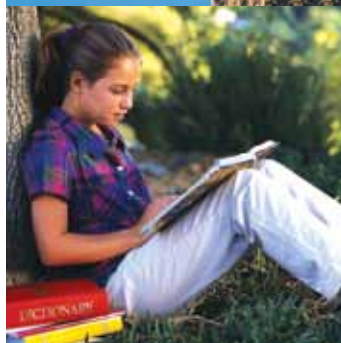
- Dance
- Arts and crafts
- Shopping
- Pottery/Ceramics
- Photography
- Drama
- Tennis
- Volleyball
- Orienteering
- Jewellery making
- Football
- Badminton
- Fashion show
- Craft

FOOD

All meals are provided by the college in the spacious and characteristic dining hall. There is a wide variety on offer on the menu from traditional 'fish & chips' to pasta. The food is fresh and tasty and there is a wonderful salad bar too. We can cater for all dietary needs including vegetarian and halal.

ACCOMMODATION

Royal Russell has 4 accommodation blocks separated into girls and boys houses. Some rooms have ensuite facilities although most use shared bathroom facilities. All the rooms are modern and furnished as study bedrooms. We encourage students to mix with other nationalities in shared rooms and for younger students coming alone the multi-bedded rooms are the best way to make friends and have fun. Children are supervised in the accommodation blocks and there is a 'houseperson' on duty at all times to look after the students' welfare.



CHURCHILL HOUSE

Churchill House, Spencer Square, Ramsgate,
Kent, England CT11 9EQ

Tel: +44 (0) 1843 586833

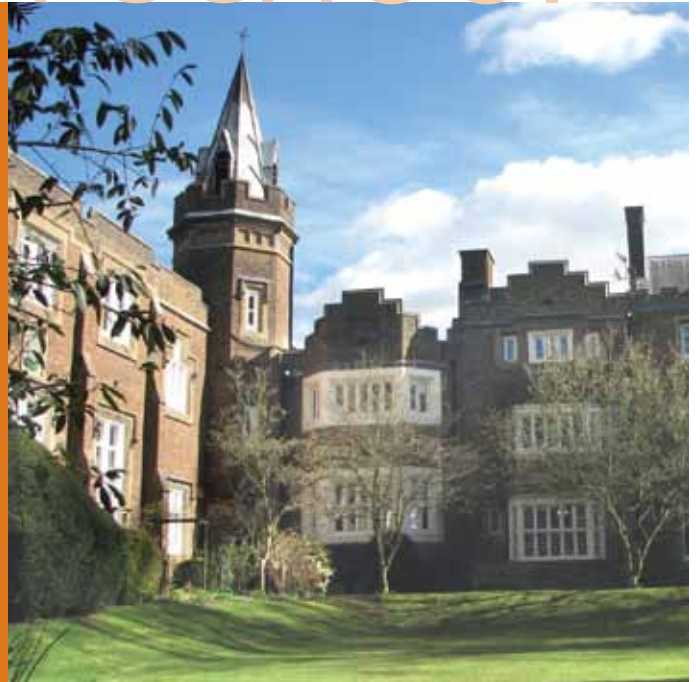
Fax: +44 (0) 1843 584827

e-mail: welcome@churchillhouse.co.uk

web: www.churchillhouse.co.uk

summer school aldenham school

Aldenham School was founded more than 400 years ago and stands on its original site in more than 110 acres of glorious Hertfordshire countryside just to the north west of London. Queen Elizabeth 1 gave permission for the school to be built and the Foundation Stone was laid in 1597! At this school 'old tradition' is mixed with the best modern facilities. There is easy access to all London's major airports, to the motorway network and to central London itself.



FACILITIES

- Good standard of residential accommodation
- Large sports hall
- Traditional 'fives' courts
- All weather astro turf pitch
- Tennis courts
- Extensive playing fields
- Student email and internet facilities
- Student common rooms
- New theatre



THE LOCATION

Superbly located for London and its airports. The Thameslink rail service operates from nearby Radlett station (5 minute drive) to St Pancras. Trains run every 20 minutes and the journey time is 20-25 minutes to London.



THE LONDON EXPERIENCE

At Aldenham School, students are immersed in the London scene. Museums, walks, workshops, evening coach tours, art galleries and experiences in London are available in addition to the normal programme. Three afternoons and one evening are spent in London on Monday to Friday with a full day excursion out of London at the weekend.

Supplement payable for this programme (see website for prices).

summer school



AND MORE

For group leaders - the picturesque village of Letchmore Heath is only a short stroll from the school with its beautiful houses, pub and duck pond! Special additions to the programme at Aldenham include the 'Winnie the Pooh' trail in nearby Aldenham Park.

Group Leaders will receive two free English lessons and a social evening with staff each week.

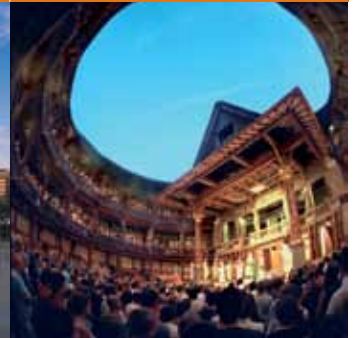
London at night



National Gallery



Globe Theatre



Science Museum



EXCURSIONS:

- London and British Museum
- Oxford*
- Windsor & Eton
- Thorpe Park*
- Cambridge
- Paris*
- Bath and Stonehenge*

* *Optional Extras (see website for prices)*

ACTIVITIES:

- Dance
- Football
- Tennis
- Shopping
- Fashion show
- Orienteering
- Craft
- Drama
- Arts and crafts
- Badminton
- Volleyball
- Pottery/Ceramics
- Photography
- Jewellery making

FOOD

All meals are served in the impressive 'olde worlde' dining room with portraits of past headmasters looking down on the students from the walls. There is a wide choice of fresh food providing the necessary well-balanced and healthy diet. We can cater for all special food needs including vegetarian, halal etc.

ACCOMMODATION

Separate accommodation is provided for girls and boys with single, twin and multi-bedded rooms. All of the accommodation houses are centrally located around the school. Laundry is organised for the students in the houses by the housekeepers.



CHURCHILL HOUSE

**Churchill House, Spencer Square, Ramsgate,
Kent, England CT11 9EQ**

**Tel: +44 (0) 1843 586833
Fax: +44 (0) 1843 584827**

**e-mail: welcome@churchillhouse.co.uk
web: www.churchillhouse.co.uk**

summer school ampleforth college

Ampleforth College was established in 1802 and adjoins the Benedictine monastery and abbey of St Laurence in a stretch of magnificent Yorkshire countryside, close to York. Ampleforth is part of the southern boundary of the North Yorkshire Moors National Park. The grounds extend to 2000 acres of outstanding natural beauty.

Ampleforth is one of the leading independent schools in the UK with wonderful facilities and a high standard of accommodation.



FACILITIES

- Well equipped classrooms
- Excellent standard of residential accommodation
- Large sports hall
- 25 metre indoor swimming pool
- All Weather astro turf pitch
- Tennis courts
- Extensive playing fields
- Golf course

THE LOCATION

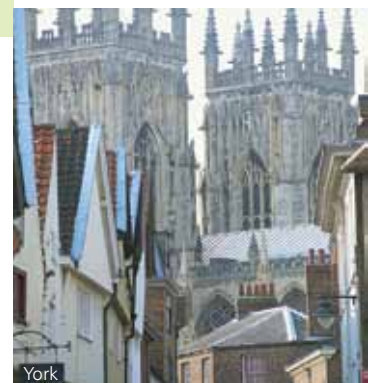
Quick access to the major road network means that Leeds/Bradford (1 hour) and Manchester International (2 hours) airports are within easy reach of Ampleforth. There are hundreds of cheap flights to Manchester from all over Europe and beyond; our transfers service is easy and economical. Transfers from and to all London airports can also be arranged. The historic city of York is only 30 minutes away. Some of the UK's finest areas of natural beauty are the North Yorkshire Moors, the Lake District and the Yorkshire Coast - all within easy reach of Ampleforth.



Sports Coaching Programme

Ampleforth offers two different types of coaching programme, students can choose to have 5 hours per week with a qualified coach for golf and tennis. The college has its own golf course, tennis courts.

Supplement payable for this programme (see website for prices).



SUMMER VACATION COURSES

summer school



AND MORE

In addition to attending 15 hours English language lessons per week (20 lessons), students at Ampleforth College will have two lessons using Rosetta Stone, a state of the art interactive English language software programme which utilises voice recognition and corrects accents of all nationalities. Students can have additional time each week to use this programme, if they so wish.

Additional trips to London can be arranged.

Group Leaders will receive two free english lessons and a social evening with staff each week.

EXCURSIONS:

- London and British Museum
- Lake District
- York Minster
- York Ghost Walk*
- Yorkshire steam railway
- Scarborough Sea Life Centre*
- City of Manchester and Manchester United Football Stadium
- Flamingo Land theme park and zoo*
- Jorvik Viking Centre - York
- York
- York Castle Museum
- Alton Towers theme park
- Edinburgh tour*

* Optional extra (see website for prices)

ACTIVITIES:

- Dance
- Tennis**
- Badminton
- Volleyball
- Fashion shows
- Pottery/Ceramics
- Orienteering
- Jewellery making
- Drama
- Arts and crafts
- Nature walks
- Shopping
- Golf**
- Indoor swimming
- Photography
- Craft

**Professional coaching rates apply

FOOD

Catering at Ampleforth is based on the use of fresh locally sourced and homemade food. There is always a wide choice of dishes and salads including a vegetarian option, providing the necessary well balanced diet for students. All dietary requirements can be accommodated.

ACCOMMODATION

Premium accommodation is in single rooms with ensuite facilities. Less expensive accommodation is available in normal single rooms and in rooms with two to four beds- these residences are towards the edge of the college campus.



Yorkshire Moors



CHURCHILL HOUSE

Churchill House, Spencer Square, Ramsgate,
Kent, England CT11 9EQ

Tel: +44 (0) 1843 586833

Fax: +44 (0) 1843 584827

e-mail: welcome@churchillhouse.co.uk

web: www.churchillhouse.co.uk

Churchill House, Spencer Square,
Ramsgate, Kent, England CT11 9EQ
Tel: +44 (0) 1843 586833 Fax: +44 (0) 1843 584827
e-mail: welcome@churchillhouse.co.uk
web: <http://www.churchillhouse.com>

