

# 2012 Dates and Prices

Learning Spanish in Spain and Latin America

¿? don Quijote



QUALITY | INNOVATION | PARTNERSHIP



## All inclusive!

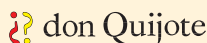
All prices per person in €

Spain

### don Quijote schools

Barcelona, Granada, Madrid, Salamanca, Tenerife, Valencia

A single enrollment fee of €65



- Start dates any Monday, all levels, open all year round!
- Small groups: average 5 students per group (maximum 8, except Granada maximum 10)
- Study materials for each level of your course
- Premium Spanish courses: maximum 3 students per group!
- Each class lasts 50 minutes
- Minimum age: 18



#### All inclusive!

- Study materials and don Quijote textbook for each level of your course.
- Combine any don Quijote school in Spain and Mexico with IEG schools in Spain without any extra charges during your stay.
- Level test and an end-of-course certificate.
- Tapas/reception at the school.
- Guided cultural tour.
- Formula +1: an extra daily class covering culture and current events.
- Tutor, support.
- Internet area and wireless connection with unlimited Internet access and email.
- Unlimited access to the don Quijote on-line Spanish course, levels A1 and A2 during your stay.
- 'Intercambio': language exchanges with native speakers.
- 24-hour emergency phone line.
- As well as many other services to provide personal assistance, activities and resources, all absolutely free. For complete details, see don Quijote brochure.



### IEG schools

Alicante, Marbella, Seville

A single enrollment fee of €65



- Start dates any Monday, all levels, open all year round!
- Maximum 10 students per group (average 6)
- Textbook for initial level (to be paid upon reservation, upper levels must be bought and paid directly to the school): €30
- Each class lasts 55 minutes
- Minimum age: 14

- Combine any IEG school and don Quijote school in Spain and Mexico without any extra charges during your stay.
- Tapas/reception at the school.
- Written and oral placement test.
- Accredited certificate and academic report upon completion of the course.
- Welcome information pack with useful information.
- Wireless connection, use of the computer and internet room, library and video room.
- Free unlimited e-mail and internet access in the school's internet room, depending on availability.

### Partner schools

Cadiz, Malaga, Pamplona

Enrollment fee per school: €65



- Start dates any Monday, all levels!
- Maximum 8 students per group (10 in high season)
- Each class lasts: 55 minutes (Pamplona); 45 minutes (Malaga); 50 minutes (Cadiz)
- Textbook for each level (to be paid directly to the school):
- €25 (Cadiz); €40 (Pamplona: for upper levels, initial level included); €35 (Malaga)
- Minimum age: 16 years (17 in Cadiz)

- Written and oral placement test.
- Accredited certificate and academic report upon completion of the course.
- Use of the computer and internet room, library and video room.
- Free unlimited e-mail and internet access in the school's internet room, depending on availability.

## International Summer Camps and Teen Programs

Barcelona, Granada, Madrid, Marbella, Salamanca, Seville, Valencia

- Enrollment fee: €65

- Start dates in July and August
- Each class lasts 45 minutes
- Max. 14 students per group

- 5-18 years

- 24-hour supervision (except Granada and Seville)

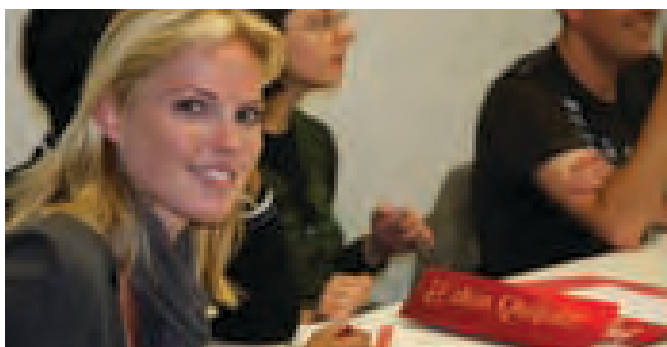


#### All inclusive!

Mixed with 60% Spanish students

- Spanish course
- Text book
- Accommodation
- 4 meals per day
- Sports and Activities
- Excursions
- Laundry service
- Medical insurance

Spanish courses





## Intensive Spanish Courses

All prices per person in €

Short duration courses: 1 to 9 weeks

Weeks	don Quijote			IEG			Partner		
	Barcelona, Granada*, Madrid, Salamanca, Tenerife, Valencia			Alicante, Marbella, Seville			Cadiz	Malaga	Pamplona
	Intensive 20+5	Super intensive 30+5	Spanish Talk 10+5	Intensive+ 20+5	Super intensive+ 25+5	Part time 10	Intensive 20+5	Intensive 20+5	Intensive 20
1	190	315	150	170	265	145	190	170	190
2	380	630	300	340	530	290	380	340	380
3	570	945	450	495	765	405	570	495	540
4	760	1,260	600	660	1,020	540	760	660	720
5	925	1,525	725	825	1,275	675	925	825	900
6	1,110	1,830	870	990	1,530	810	1,110	990	1,080
7	1,295	2,135	1,015	1,155	1,785	945	1,295	1,155	1,260
8	1,400	2,320	1,120	1,320	2,040	1,080	1,400	1,320	1,440
9	1,575	2,610	1,260	1,485	2,295	1,215	1,575	1,485	1,620

Long duration courses: 10 to 19 weeks

Weeks	don Quijote			IEG			Partner		
	Barcelona, Granada*, Madrid, Salamanca, Tenerife, Valencia			Alicante, Marbella, Seville			Cadiz	Malaga	Pamplona
	Intensive 20+5	Super intensive 30+5	Spanish Talk 10+5	Intensive+ 20+5	Super intensive+ 25+5	Part time 10	Intensive 20+5	Intensive 20+5	Intensive 20
10	1,750	2,900	1,400	1,550	2,400	1,300	1,750	1,550	1,750
11	1,925	3,080	1,485	1,705	2,640	1,430	1,925	1,705	1,925
12	2,040	3,240	1,620	1,860	2,880	1,560	2,040	1,860	2,100
13	2,210	3,510	1,755	2,015	3,120	1,690	2,210	2,015	2,275
14	2,380	3,780	1,890	2,170	3,360	1,820	2,380	2,170	2,450
15	2,550	4,050	2,025	2,325	3,600	1,950	2,550	2,325	2,625
16	2,720	4,320	2,160	2,480	3,840	2,080	2,720	2,480	2,800
17	2,890	4,590	2,295	2,635	4,080	2,210	2,890	2,635	2,975
18	3,060	4,860	2,430	2,790	4,320	2,340	3,060	2,790	3,150
19	3,230	5,130	2,565	2,945	4,560	2,470	3,230	2,945	3,325

Spanish for Life: 20 to 52 weeks

Weeks	don Quijote			IEG			Partner		
	Barcelona, Granada*, Madrid, Salamanca, Tenerife, Valencia			Alicante, Marbella, Seville			Cadiz	Malaga	Pamplona
	Intensive 20+5	Super intensive 30+5	Spanish Talk 10+5	Intensive+ 20+5	Super intensive+ 25+5	Part time 10	Intensive 20+5	Intensive 20+5	Intensive 20
20	3,100	4,800	2,700	3,100	4,800	2,600	3,100	3,100	3,500
21	3,255	5,040	2,835	3,255	5,040	2,730	3,255	3,255	3,675
22	3,410	5,280	2,970	3,410	5,280	2,860	3,410	3,410	3,850
23	3,565	5,520	3,105	3,565	5,520	2,990	3,565	3,565	4,025
24	3,720	5,760	3,240	3,720	5,760	3,120	3,720	3,720	4,200
32	4,960	7,680	4,320	4,960	7,680	4,160	4,960	4,960	5,600
40	6,200	9,600	5,400	6,200	9,600	5,200	6,200	6,200	7,000
48	7,440	11,520	6,480	7,440	11,520	6,240	7,440	7,440	8,400
Extra	155	240	135	135	240	130	155	155	175

\* Granada: IEG prices; maximum 10 students per group; courses are fully don Quijote (Intensive+ = Intensive, Super intensive+ = Super intensive, Part time = Spanish Talk).

- In the exceptional case that only 1 or 2 students are enrolled in a course in the same level group, the number of classes per week will be reduced slightly. In Cadiz the school reserves the right to change a group course into One to One tuition. If this happens there will be a reduction of class hours of 50%.
- All intensive courses (20+5) will be converted into a Christmas course of 20 classes weekly during Christmas time.
- In Pamplona beginners can start on the 1<sup>st</sup> and 3<sup>rd</sup> Monday of every month.
- All special discount prices listed above are applicable when reserving uninterrupted weeks and the total cost of the program is paid for in full, in advance.
- If you want to take a break during the course of your program, you must give us at one week's notice and pay the corresponding change fee.

Spain

Spanish courses





## Specialized Spanish Courses

All prices per person in €

Spain

### University Courses and Placement

#### Foundation course: 6 to 9 months

Barcelona, Madrid, Salamanca, Valencia		Start dates	
28 weeks	4,340	Jan	Sep
34 weeks	5,270	2	10

**Required levels:** All levels  
20 + 5 classes of Intensive Spanish per week.

don Quijote will help you to apply for one Public or Private Spanish University for free (tuition fees, administration fees or any other University fees are not included).

### University Courses and Placement

#### PAU preparation course/exam: 5 or 8 months

	Madrid	Salamanca	Start dates	
22 weeks	1,900	3,100	Jan	Oct
32 weeks	2,750	4,300	9	1

**Required levels:** B2 (advanced)  
don Quijote will help you to apply for one Public or Private Spanish University for free (tuition fees, administration fees or any other University fees are not included).

Madrid: 9 classes per week.  
Salamanca: 15 classes per week.

**Subjects**  
Lengua Española, Comentario de texto y Literatura, Historia de España, Lengua Extranjera (Inglés), Geografía

### Christmas course

At all don Quijote schools		Start dates	
1 week	190	Dec 2011	Dec 2012
2 weeks	380	1-week course	19, 27
		2-week course	19

**Required level:** All levels  
20 + 5 classes of Intensive Spanish per week.

### Spanish and Cooking

Barcelona		Start dates		
4 weeks	1,890	Jan	Jun	Jul
		9	4	2

**Required level:** All levels  
20 + 5 classes of Intensive Spanish + 10 cooking classes per week. Minimum 3 students.

### Spanish and Wine tasting

Salamanca		Start dates	
2 weeks	570	Apr	Oct
extra week	350	9	15

**Required level:** All levels  
20 + 5 classes of Intensive Spanish + 10 wine tasting classes per week.  
Minimum 3 students.

### Spanish and Scuba Diving

Tenerife		Start dates
2 weeks Padi Beginner/Advanced	775	Any Monday
2 weeks Padi Dive Master	1,195	

**Required level:** All levels  
20 + 5 classes of Intensive Spanish + 5 dive classes per week.

### D.E.L.E. Exam: A1, A2



For those wishing to take the A1/2 exam there are no specific D.E.L.E. preparation classes. Instead we recommend that you follow 4 weeks of our intensive course (along with some individual classes) in order to be prepared to take the exam.

### D.E.L.E. Preparation Courses/Exams: B1, B2, C1, C2

Barcelona, Granada, Madrid, Salamanca, Valencia			Start dates		
	B1 or B2	C1 or C2	4-week course	Apr	Jul
				30	30
2 weeks	405	450		May	Aug
4 weeks	710	780	2-week course	14	13
				29	29

**Required levels**  
B1: B1 (intermediate)  
B2: B2 (advanced)

C1: C1 (superior)  
C2: C2 (mastery)  
20 classes per week.

**Examination dates:**  
May 25, August 24 and November 9.

- To enroll in a DELE course, you must have at least the same level of Spanish taught in the course.
- Exam fees are not included (approximate €105 for A1, €120 for A2, €150 for B1, €172 for B2, €180 for C1 and €187 for C2).
- To formally register for the exam, please send us a copy of your passport together with your personal details, permanent address and full payment at least 10 weeks before the exam date. The student's exam is not guaranteed unless the payment is done.

### Golden Age program

Tenerife		Start dates			
2 weeks	560	Jan	Feb	Mar	Apr
		2, 16, 30	13, 27	12, 26	9, 23
		May	Jun	Jul	Aug
		7, 21	4, 18	2, 9, 16, 23, 30	6, 13, 20, 27
		Sep	Oct	Nov	Dec
		3, 17	1, 15, 29	12, 26	-

**Required level:** All levels  
Includes 20 + 5 classes of intensive Spanish and visits, cultural and dance lessons.  
Minimum 3 students.

### Spanish and Flamenco

Granada, Madrid		Start dates
1 week	430	Any Monday

**Required level:** All levels  
20 + 5 classes of Intensive Spanish + 8 classes of Flamenco per week.

### History, Art or Literature

Granada		Start dates					
2 weeks	610	Jan	Mar	Jun	Jul	Sep	Oct
4 weeks	1,050	3	5	18	9	3	1

**Required level:** B1 (intermediate).  
10 classes of Spanish + 10 classes of History / Art/ Literature per week.  
Minimum 3 students.

### Spanish and Hiking

Tenerife		Start dates	
2 weeks	705	Jun	Sep
		4	24

**Required level:** All levels  
Includes 20 + 5 classes of intensive Spanish, 6 three-hour hiking visits, 2 full day excursions, 2 half day excursions. Minimum 5 students.

2012 dates and prices

Spanish courses

## Specialized Spanish Courses

All prices per person in €

### Premium Spanish

#### Premium Spanish classes



Barcelona, Madrid, Salamanca, Tenerife

weeks	1	2	3	extra
<b>Premium Intensive</b> 20 Mini group	535	970	1,400	<b>455</b>
<b>Premium Intensive+</b> 20 Mini group + 5 One to One	860	1,605	2,320	<b>760</b>
<b>Premium Super intensive</b> 20 Mini group + 10 One to One	1,055	1,985	2,870	<b>940</b>
<b>Premium Super immersion</b> 20 Mini group + 15 One to One	1,240	2,350	3,405	<b>1,110</b>

- Maximum **3 students** in the group course.
- Start dates any Monday, all levels.
- Fully personalized attention.

**Included**

- Special V.I.P. treatment: coffee **included** during the break.
- Pre exam and oral level test by phone before arrival.
- 2 hours of tutorial by phone or email after returning home.
- Daily conversation 'classes' during a meal in a restaurant (menu of the day) with your teacher in the Super intensive or Super immersion courses.

### One to One classes

Barcelona, Granada, Madrid, Salamanca, Tenerife, Valencia

	1 student	2 students*
<b>1 class</b>	40	30
<b>5 classes</b>	195	145
<b>10 classes</b>	380	285
<b>15 classes</b>	570	420
<b>20 classes</b>	740	540
<b>25 classes</b>	900	650
<b>+26 / per class</b>	<b>35</b>	<b>25</b>

\*Per person in the same class.

- Start dates any Monday, all levels.
- For specialized subjects, ask us for specific availability and quotes.
- Supplement per class outside normal class hours (ask for availability): €18.
- Above mentioned packages are total classes per week and applicable when reserved and paid for in full and in advance.

### Intensive Business / Exam



Barcelona, Madrid, Salamanca

Start dates

<b>2 weeks</b>	<b>610</b>	Jan	Feb	Mar	Apr	May	Jun
<b>4 weeks*</b>	<b>1,050</b>	23	20	19	16	14	11
		Jul	Aug	Sep	Oct	Nov	Dec
		9	6	3	1, 29	-	-

**Required level:** B1 (intermediate)

20 classes of Intensive Business per week.

\*The 4-week course is required to be eligible for the Chamber of Commerce exam.

Exam fees of approximate €120 are **not** included.

### Intensive Tourism / Exam



Granada

Start dates

<b>2 weeks</b>	<b>610</b>	Jan	Apr	Jun	Jul	Oct
<b>4 weeks*</b>	<b>1,050</b>	23	16	4	2	1

**Required level:** B1 (intermediate)

20 + 5 classes of Intensive Spanish + 10 classes of Intensive Tourism.

\*The 4-week course is required to be eligible for the Chamber of Commerce exam.

Exam fees of approximate €120 are **not** included.

### Spanish and Internship (unpaid)

Barcelona, Madrid, Salamanca

Start dates

<b>4 weeks Spanish</b>	<b>1,700</b>
<b>2 weeks Spanish + 2 weeks Business</b>	<b>2,140</b>

Study Spanish at any don Quijote school, any Monday year round. See above for start dates of the Intensive Business course.

- **Required level:** Upon completing the Spanish course you must have a B2 level (advanced).
- **Includes** 4-week Intensive Spanish 20+5 (General course) or 2-week Intensive Spanish + 2-week Intensive Business (Business course), CV coaching, professional orientation, interview, 8-week placement.
- **Internship:** Barcelona, Madrid, Salamanca
- **Extra week:** €190 per week (Intensive Spanish course); €150 per week (Internship)

### Spanish and Hotel Internship (paid)

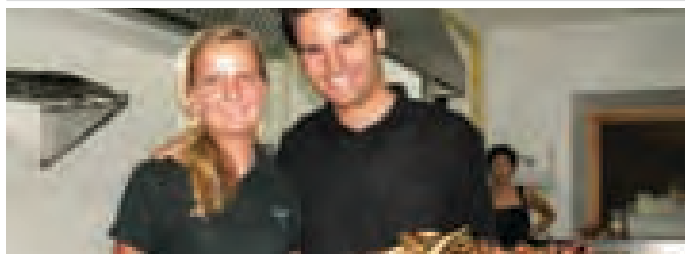
At all don Quijote schools

Start dates

<b>4 weeks Spanish</b>	<b>1,450</b>
------------------------	--------------

Study Spanish at any don Quijote school, any Monday.

- **Required level:** Upon completing the Spanish course you must have a B1 level (intermediate).
- Only available for students of Tourism and EU citizens.
- **Includes** 4-week Intensive Spanish, CV coaching, interview, placement, references.
- **Internship:** all over Spain.



### Teachers of Spanish

At all don Quijote schools

Start dates

<b>2 weeks Group</b>	<b>595</b>
<b>2 weeks Individual</b>	<b>1,195</b>

	Jul	
Group course	Barcelona	23
	Salamanca	2, 16
	Madrid	30

**Required level:** Teacher of Spanish

Group course: 20 classes per week.

One to One course: 15 classes per week.

Minimum 3 students.

**Individual course**  
Available at all don Quijote schools, any Monday, except in the weeks coinciding with the group course.

### Group programs

At all don Quijote schools

Start dates

**8 students or more**

Any Monday

**Special prices!** Please contact us (groups@donquijote.org) or any language travel organization in your country that represents don Quijote.



## Accommodation

All prices per week/person in €

### GENERAL INFORMATION ACCOMMODATION

- Your accommodation will be available the Sunday before you start your course from 12 noon onwards (18:00 for Cadiz). You must leave it for the new students on the Saturday following the end of the course before 12 noon.
- Barcelona: 90% of the families offer a packed lunch instead of a meal.
- If you reserve a double (shared with another student) and there is no other student with whom you can share, we reserve the right to change your room at any time.
- Double rooms in Cadiz, Pamplona and don Quijote residence in Valencia only available for 2 students travelling together.
- Access to private bathroom (not available in Cadiz, Malaga and Pamplona) and subject to availability per person/week: €110 in individual room, €65 in double room (in double room shared with your roommate).
- An additional placement fee of €75 per week, per person, will be charged for those staying in accommodation but not taking a course.
- Upon your arrival in student apartments and residences a deposit of €150 will be required. This deposit will be returned at the end of your stay provided there are no damages.
- Triple rooms in student apartments and residences on request when reservation and arrival are shared: 20% discount on the double room price per student (discount does not apply on high season supplements).
- Double room for individual use available on request and with a supplement of 35% on the individual room price.

### Home stay / Host family

#### Granada, Salamanca, Valencia

	individual	double
Breakfast	139	129
Half board	169	159
Full board	189	169

#### Barcelona, Madrid, Tenerife

	individual	double
Breakfast	199	169
Half board	229	189
Full board	259	229

#### Alicante, Marbella, Seville

	individual	double
Breakfast	-	-
Half board	169	159
Full board	189	169

#### Cadiz, Malaga, Pamplona

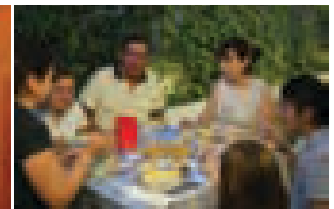
	individual	double
Breakfast	-	-
Half board	229	189
Full board	259	229

### Premium Home stay / Host family



#### Salamanca, Tenerife

	individual	double
Breakfast	-	-
Half board	400	355
Full board	475	435



#### HOME STAY STANDARD

- Includes laundry service once a week, towels, bed linen.
- Extra day: €45 in individual room, €35 in double room. Cadiz: €55 in individual or double room. Malaga: €45 in individual room, €40 in double room. Maximum 3 days. The cost of an entire week will be charged if you need 4 or more additional days.

#### HOME STAY PREMIUM

- Includes access to internet, daily room cleaning, private bathroom, laundry service once a week, towels, bed linen.
- Extra day: €55 in double room, €75 in individual room. Maximum 3 days. The cost of an entire week will be charged if you need 4 or more additional days.

#### HIGH SEASON SUPPLEMENTS per week/person:

- Malaga (from Jun 3 to Sep 30): €40 in double room, €70 in individual room.
- Pamplona during San Fermin Festival (from Jul 1 to Jul 14): €135 in double or individual room.
- Tenerife during carnival (from Feb 12 to Feb 26): €55 in double room, €95 in individual room.

### Private Apartment

	Alicante Marbella	Granada Salamanca Tenerife	Barcelona	Madrid	Seville	Valencia
--	-------------------	----------------------------	-----------	--------	---------	----------

#### APARTMENT / STUDIO price per apartment/week

season	low	high	low	high	low	high	low	high	low	high	low	high
1 or 2 pax	695	1,295	495	795	995	1,600	995	1,500	695	1,595	695	795
3 or 4 pax	895	1,495	695	995	1,195	1,800	1,195	1,700	895	1,795	895	995

#### SHARED STUDENT APARTMENT FOR 'INDIVIDUAL USE' price per apartment and for each block of 4 weeks

season	low	high	low	high	low	high	low	high	low	high	low	high
1 or 2 pax	1,700	2,635	1,200	1,900	1,900	3,400	1,900	3,400	1,700	3,100	1,700	3,100
3 or 4 pax	2,000	3,500	1,600	2,300	2,200	3,900	2,200	3,900	2,000	3,500	2,000	3,500

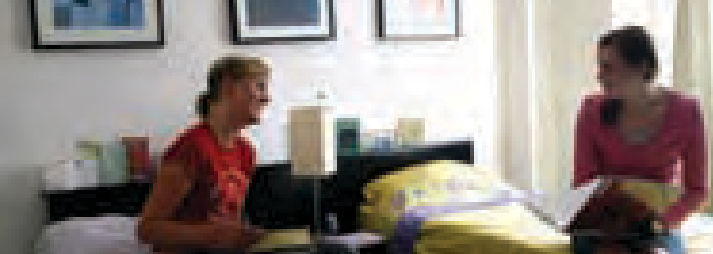
#### PRIVATE APARTMENTS

- Includes wifi access, weekly cleaning service (in apartment/studio), private bathroom, fully equipped kitchen, bed linen, maintenance, gas, electricity, water costs and local taxes.
- 1-hour daily cleaning service is available in apartment/studio on request: €75 per week.
- Prices are approximate and subject to surcharges during fairs, conventions, high season and events, national/local holidays. Ask for availability and exact prices.
- Private apartments must be paid at time of booking and in case of cancellation no refund or credits towards purchase of other products applies.

#### High season

**Alicante:** Jun-Sep; **Barcelona:** May-Aug and Events; **Granada:** 'Semana Santa'; **Madrid:** May-Aug and Events; **Marbella:** Jun-Aug; **Salamanca:** Events; **Sevilla:** Easter and 'Feria de abril'; **Tenerife:** Jun-Jan and events; **Valencia:** Jun-Sep.

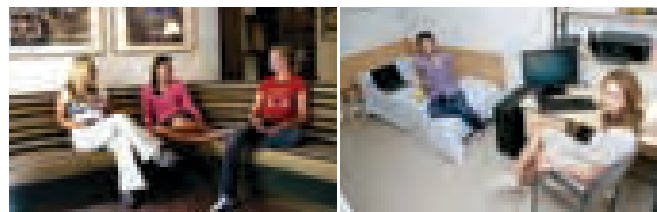




### Shared student apartment



Alicante, Granada, Marbella, Salamanca, Seville, Tenerife, Valencia		
	individual	double
No meals	120	90
Barcelona, Madrid		
	individual	double
No meals	190	110
Cadiz, Malaga		
	individual	double
1 or 2 weeks	235	165
3 to 11 weeks	190	110
12 weeks or more	170	100
Pamplona		
	individual	double
1 or 2 weeks	175	145
3 to 11 weeks	120	90
12 weeks or more	110	80



#### STANDARD STUDENT APARTMENT

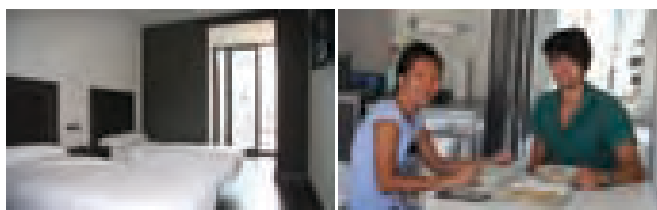
- **Includes** blankets, bed linen (in Cadiz can be hired and in Malaga can be bought, approx. €25), access to fully equipped kitchen and laundry room (only once a week in Pamplona), shared bathroom, shared tv, gas costs, central heating (except Malaga).
- **Not included** cleaning service.
- Extra day: €45 in individual room, €35 in double room. Maximum 3 days. The cost of an entire week will be charged if you need 4 or more additional days.

**PREMIUM STUDENT APARTMENT:** Shared with maximum 3 other students, free internet, daily room cleaning.

- **Includes** blankets, bed linen, access to fully equipped kitchen and laundry room, shared bathroom, shared tv, central heating, gas costs.
- Extra day Granada, Salamanca, Tenerife and Valencia: €85 in individual room, €65 in double room. Extra day Barcelona and Madrid: €105 in individual room, €95 in double room. Maximum 3 days. The cost of an entire week will be charged if you need 4 or more additional days.

**HIGH SEASON SUPPLEMENTS** in all types of shared student apartments per week/person:

- Marbella (from Jun 10 to Aug 25): €40 in double room, €70 in individual room.
- Pamplona during San Fermin Festival (from Jul 1 to Jul 14): €135 in double or individual room.
- Tenerife during carnival (from Feb 12 to Feb 26): €55 in double room, €95 in individual room.



### Premium Shared student apartment



Granada, Salamanca, Tenerife, Valencia		
	individual	double
No meals	580	455
Barcelona, Madrid		
	individual	double
No meals	685	545

### don Quijote residence (with private bathroom)



	Barcelona Study hotel*** Casa de Lenguas		Granada Casa de Lenguas		Valencia Galileo Galilei	
	individual	double	individual	double	individual	double
No meals	455	300	175	145	255	200
Half board	535	380	220	195	285	225
Full board	595	440	240	215	315	265

#### NO HIGH SEASON SUPPLEMENTS!

- **Includes** bed linen, daily cleaning service in communal areas, use of kitchen (in Barcelona and Granada), maintenance, gas, electricity and water costs.
- Extra days at an additional cost available. Maximum 3 days. The cost of an entire week will be charged if you need 4 or more additional days.
- Extra days (except Barcelona Study Hotel): €45 in individual room, €35 in double room.
- Extra days Barcelona Study Hotel: €75 in individual room, €45 in double room.

### Student residence / Family residence



	Salamanca, Seville Casa de Lenguas		Barcelona, Madrid, Marbella, Valencia	
	individual	double	individual	double
No meals	175	145	255	200
Half board	220	195	285	225
Full board	240	215	315	265

**HIGH SEASON SUPPLEMENTS** per week/person:

Barcelona (from Jun 17 to Aug 18): €25 in double room, €50 in individual room.  
Marbella (from Jun 10 to Aug 25): €75 in double room, €125 in individual room.

- **Includes** bed linen, daily cleaning service in communal areas.
- Marbella: Meals only available in July and August.
- Extra day: €45 in individual room, €35 in double room. Maximum 3 days. The cost of an entire week will be charged if you need 4 or more additional days.



## International Summer Camps

All prices per person in €

### Barcelona Camp

5 - 18 years Residential stay	July 1 / 15	July 29
1 week	-	660
2 weeks	1,450	1,300
4 weeks	2,675	-
6 weeks	3,550	-
<b>extra week</b>	<b>785</b>	<b>660</b>

Course must end on Saturday August 11.  
Extra weeks are not guaranteed. Please contact us for availability.

### Madrid Camp

5 - 18 years Residential stay	July 1 / 15
1 week	-
2 weeks	1,450
4 weeks	2,675
6 weeks	3,550
<b>extra week</b>	<b>785</b>

Course must end on Saturday August 11.  
Extra weeks are not guaranteed. Please contact us for availability.

### Marbella - Alborán Camp

13 - 18 years Residential stay	July 1 / 15	July 29	August 12
1 week	-	660	660
2 weeks	1,450	1,300	1,300
4 weeks	2,675	2,400	-
6 weeks	3,600	-	-
8 weeks	4,500	-	-
<b>extra week</b>	<b>785</b>	<b>660</b>	<b>660</b>

Course must end on Saturday August 25.  
Extra weeks are not guaranteed. Please contact us for availability.

### Marbella - Alemán Camp

5 - 13 years Residential stay	July 1 / 15	July 29	August 12
1 week	-	660	660
2 weeks	1,450	1,300	1,300
4 weeks	2,675	2,400	-
6 weeks	3,600	-	-
8 weeks	4,500	-	-
<b>extra week</b>	<b>785</b>	<b>660</b>	<b>660</b>

Course must end on Saturday August 25.  
Extra weeks are not guaranteed. Please contact us for availability.

### Marbella - Albergue Camp

16 - 18 years Residential and Home stay	July 1 / 15
2 weeks	1,450
4 weeks	2,675
<b>extra week</b>	<b>785</b>

Course must end on Saturday July 28. Extra weeks are not guaranteed. Please contact us for availability.

### Granada Junior Program

14 - 18 years Residential and Home stay	July 1 / 15
2 weeks	1,350
4 weeks	2,500
<b>extra week</b>	<b>695</b>

Course must end on Saturday July 28. Extra weeks are not guaranteed. Please contact us for availability.

### Seville Junior Program

14 - 18 years Residential and Home stay	July 1 / 15
2 weeks	1,350
4 weeks	2,500
<b>extra week</b>	<b>695</b>

Course must end on Saturday July 28. Extra weeks are not guaranteed. Please contact us for availability.

### Salamanca Camp

5 - 18 years Residential and Home stay	July 1 / 15	July 29
1 week	-	660
2 weeks	1,350	1,300
4 weeks	2,500	-
6 weeks	3,350	-
<b>extra week</b>	<b>695</b>	<b>660</b>

Course must end on Saturday August 11.  
Extra weeks are not guaranteed. Please contact us for availability.

### Valencia Camp

13 - 18 years Residential and Home stay	July 1 / 15	July 29
1 week	-	660
2 weeks	1,450	1,300
4 weeks	2,675	-
6 weeks	3,550	-
<b>extra week</b>	<b>785</b>	<b>660</b>

Course must end on Saturday August 11.  
Extra weeks are not guaranteed. Please contact us for availability.





## International Summer Camps

All prices per person in €

### Day camp / Spanish course only

Day camp	325 per week
Spanish course only	225 per week

Start dates		July			August
Years	City	1	15	29	12
5 - 18	Barcelona	x	x	x	-
14 - 18	Granada	x	x	-	-
5 - 18	Madrid	x	x	-	-
16 - 18	Marbella - Albergue	x	x	-	-
13 - 18	Marbella - Alborán	x	x	x	x
5 - 13	Marbella - Alemán	x	x	x	x
5 - 18	Salamanca	x	x	x	-
14 - 18	Seville	x	x	-	-
13 - 18	Valencia	x	x	x	-

x = Available

- = Not available

### Pick-up service to Summer camps

		1 pers.	2 pers. <sup>(1)</sup>
<b>Barcelona</b>	Barcelona airport, bus/train station	85	55
<b>Granada</b>	Granada airport, bus/train station	85	55
	Bus from and to Madrid <sup>(2)</sup>	145	145
<b>Madrid</b>	Madrid airport, bus/train station	85	55
<b>Marbella</b>	Malaga airport, bus/train station	85	55
	Bus from and to Madrid <sup>(2)</sup>	145	145
<b>Salamanca</b>	Madrid airport	180	105
	Bus from and to Madrid <sup>(2)</sup>	105	105
<b>Seville</b>	Seville airport, bus/train station	85	55
	Bus from and to Madrid <sup>(2)</sup>	125	125
<b>Valencia</b>	Valencia airport, bus/train station	85	55
	Bus from and to Madrid <sup>(2)</sup>	125	125

<sup>(1)</sup> When reservation, journey and arrival are shared.

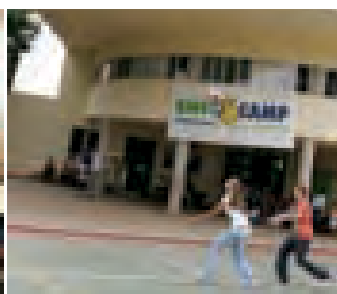
<sup>(2)</sup> Return transfer from Madrid includes: collection at Madrid airport, transfer to meeting point and bus to destination (please check our bus schedule before planning your trip to Spain).

### Optional sports

	Tennis 10 hours	Paddle 10 hours	Horseback riding 9 hours	Golf 10 hours	Swimming 8 hours	Sailing 16 hours
<b>2 weeks</b>	<b>169</b>	<b>169</b>	<b>169</b>	<b>255</b>	<b>95</b>	<b>255</b>
<b>Barcelona</b>	x	-	-	-	-	-
<b>Granada</b>	-	-	-	-	-	-
<b>Madrid</b>	x	-	x	-	-	-
<b>Marbella - Albergue</b>	x	x	x	x	-	-
<b>Marbella - Alborán</b>	x	x	x	x	x	-
<b>Marbella - Alemán</b>	x	x	x	x	x	-
<b>Salamanca</b>	x	-	x	-	-	-
<b>Seville</b>	-	-	-	-	-	-
<b>Valencia</b>	-	-	-	-	-	x

### Additional fees

<b>Enrollment</b> single fee	<b>65</b>
<b>Change of reservation</b> each change you make in your reservation before and after arrival	<b>125</b>
<b>Extra night</b>	<b>50</b>
<b>Camp uniform (optional)</b> 5 T-shirts, 1 sweatshirt, 2 pair of shorts, baseball cap	<b>75</b>
<b>Day camp bus (optional)</b> Daily transfer, 2 weeks. Minimum 5 students.	<b>145</b>



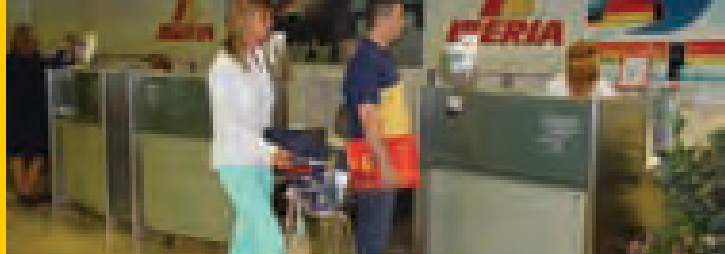
Spain

9

2012 dates and prices



Summer camps



## Other services, fees and holidays

All prices per person in €

### Pick-up service from the airport, train and bus station to your accommodation

To	From	1 pers.	2 pers. <sup>(1)</sup>
Alicante	Alicante airport, bus/train station	85	55
	Valencia airport	250	210
Barcelona	Barcelona airport, bus/train station	85	55
	Gerona airport	225	125
	Reus airport	225	125
Cadiz	Tarragona airport	225	125
	Jerez airport	85	75
Granada	Seville airport	185	170
	Granada airport, bus/train station	85	55
Madrid	Malaga airport	165	105
Madrid	Madrid airport, bus/train station	85	55
Malaga	Madrid airport, bus/train station	85	85

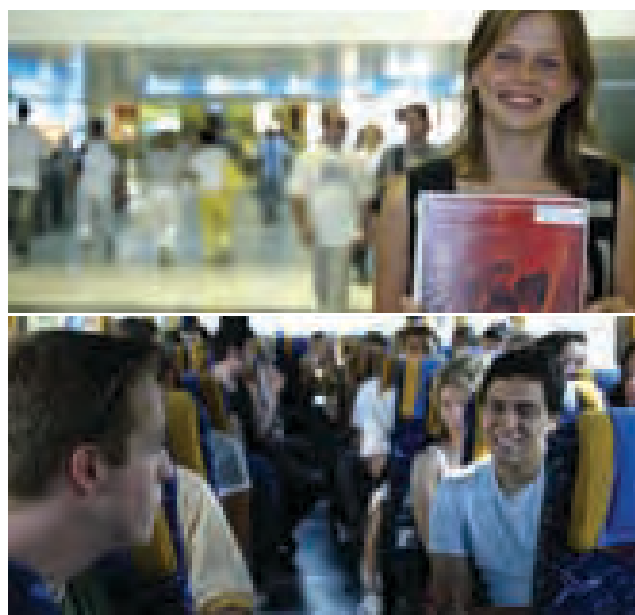
To	From	1 pers.	2 pers. <sup>(1)</sup>
Marbella	Malaga airport	95	70
	Gibraltar airport	120	90
Pamplona	Pamplona airport, bus/train station	85	55
	Salamanca airport, bus/train station	85	55
Salamanca	Valladolid airport	199	115
	Madrid airport	199	115
Seville	Madrid to bus station MAD-SA <sup>(2)</sup>	115	90
	Seville airport, bus/train station	85	55
Tenerife (Puerto de la Cruz)	Tenerife 'Norte' airport, bus station	85	55
	Tenerife 'Sur' airport	155	99
Valencia	Valencia airport, bus/train station	85	55
	Alicante airport	250	210

<sup>(1)</sup> When reservation, journey and arrival are shared.

<sup>(2)</sup> Transfer from Madrid airport to bus station Madrid and includes bus ticket to Salamanca and transfer to your accommodation in Salamanca.

### Additional fees

<b>Enrollment</b> single fee (except partner schools in Cadiz, Malaga and Pamplona = per school)	65
<b>Study materials</b> only IEG and partner schools	25 - 40
<b>Change of reservation</b> each change you make in your reservation before and after arrival	125
<b>Study break</b> for a period of 3 weeks maximum after arrival	100
<b>Placement</b> per week when staying in accommodation without taking a course	75
<b>Medical insurance</b> per 4 weeks (includes hospitalization and repatriation)	60
<b>Courier express mail</b> for original certificates, invitation letters	110
<b>Cancellation guarantee</b> of the total invoice (non refundable and must be paid in full upon reservation)	5%
<b>Private bathroom</b> in shared apartment or residence, individual/double room per week	110/65



### Holidays

**IMPORTANT! 2012 HOLIDAYS are not yet confirmed, please find a provisional list based on 2011. Please check our web site for updated 2012 holidays: [www.donquijote.org/holidays](http://www.donquijote.org/holidays)**

- All schools close on holidays, no classes.
- At don Quijote and IEG schools, when 2 holidays fall within one week, classes of one day will be made up (except for One to One classes which will be recuperated in any case).
- Remember that public holidays falling on a Sunday are celebrated on a weekday.
- Classes will start on Tuesday when a public holiday falls on a Monday.
- All schools are open year round (except Cadiz: closed from Dec 24, 2012 to Jan 7, 2013 and Pamplona: closed from Dec 22, 2012 to Jan 1, 2013).
- Besides the national holidays each city has another 4 holidays.

Holidays	Jan	Feb	Apr	May	Jun	Jul	Aug	Sep	Oct	Nov	Dec
<b>National</b>	1, 6	-	-	6	1	-	-	15	-	12	1, 6, 8, 25
<b>Local</b>											
Alicante	2, 6	-	19	6, 9	1, 5	25	-	15	-	12	1, 6, 8, 25
Barcelona	6	20	-	6, 9	1	-	-	15	11, 24	12	1, 6, 8, 25, 26
Cadiz	2, 6	28	7	5, 6	1	-	-	15	-	12	1, 6, 8, 25
Granada	2, 6	28	-	5, 6	1	23	-	15	15	12	1, 6, 8, 25
Madrid	6	-	19	5, 6	1, 2, 15	-	-	15	-	12	1, 9, 6, 8, 25
Malaga	2, 6	28	-	5, 6, 30	-	-	-	15	8	12	1, 6, 8, 25
Marbella	6	28	-	5, 6	1	11	-	15	-	12, 19	1, 6, 8, 25, 26
Pamplona	2, 6	-	19	5, 6	1	-	25	15	-	12	1, 29, 3, 6, 8, 25
Salamanca	6	-	19	5, 6, 23	1	12	-	15	8	12	1, 6, 8, 25
Seville	2, 6	28	-	5, 6	1, 30	23	-	15	-	12	1, 6, 8, 25, 26
Tenerife	6	2	-	5, 6	1, 30	-	-	15	-	12	1, 6, 8, 25
Valencia	6	-	19	5, 6, 9, 16	1	-	-	15	-	9, 12	1, 6, 8, 25



### don Quijote schools

Guanajuato, Oaxaca, Playa del Carmen, Puerto Vallarta

A single enrollment fee of US\$ 100



- Start dates any Monday, all levels, open all year round!
- Small groups: maximum 6 students per group (8 in high season)
- Textbook (to be paid upon reservation): US\$45
- Executive Spanish courses!
- Each class lasts 50 minutes
- Minimum age: 16



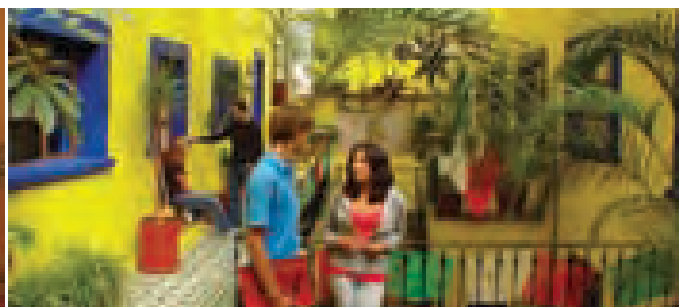
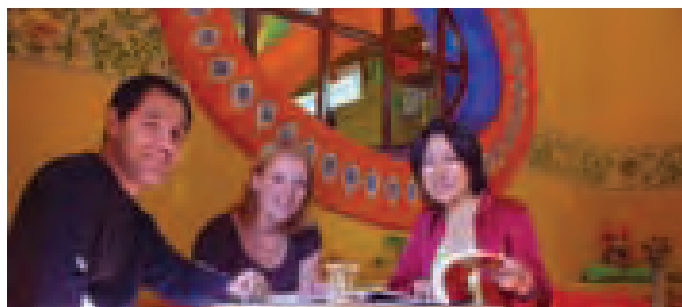
#### Included

- Combine stays at different don Quijote and IEG schools in Spain and Mexico without any extra charges.
- Level test and an end-of-course certificate.
- Tutor.
- Daily afternoon workshops: cooking, arts and crafts, salsa classes, singing Mexican songs, a fiesta or a picnic...
- Internet area.
- Unlimited access to the don Quijote on-line Spanish course, levels A1 and A2 during your stay.
- 24-hour emergency phone line.

As well as many other services to provide personal assistance, activities and resources, all absolutely free. For complete details, see don Quijote brochure.



Mexico



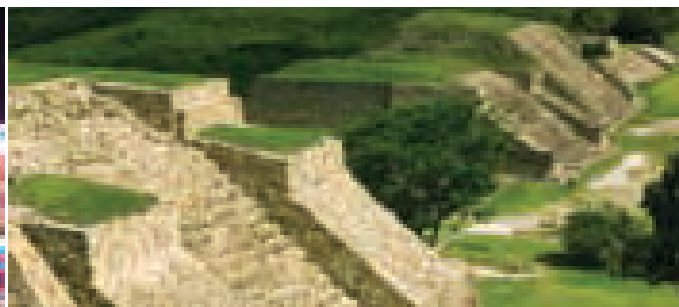
### Holidays

IMPORTANT! 2012 HOLIDAYS are not yet confirmed, please find a provisional list based on 2011.

Please check our web site for updated 2012 holidays: [www.donquijote.org/holidays](http://www.donquijote.org/holidays)

- All schools close on holidays, no classes.
- Remember that public holidays falling on a Sunday are celebrated on a weekday.
- Classes will start on Tuesday when a public holiday falls on a Monday.
- All schools are open year round.

	Jan	Feb	Mar	Apr	May	Jun	Jul	Aug	Sep	Oct	Nov	Dec
Guanajuato	1	6	19	6	1	-	-	-	16	-	2, 19	25
Oaxaca	1	6	19	6	1	-	-	-	16	-	2, 19	25
Playa del Carmen	1	6	19	6	1	-	-	-	16	-	2, 19	25
Puerto Vallarta	1	6	19	6	1	-	-	-	16	-	2, 19	25



Spanish courses

# Mexico



## Intensive Spanish courses

All prices per person in US\$

### Short duration courses: 1 to 11 weeks

Weeks	Guanajuato, Oaxaca, Puerto Vallarta				Playa del Carmen			
	Part time 15	Intensive 20	Super intensive 25	Best of Both 15+10	Part time 15	Intensive 20	Super intensive 25	Best of Both 15+10
1	164	199	230	448	188	233	271	494
2	328	398	460	896	376	466	542	988
3	492	597	690	1,344	564	699	813	1,482
Extra week	+148	+179	+207	+403	+169	+209	+243	+444
4	640	776	897	1,747	733	908	1,056	1,926
5	788	955	1,104	2,150	902	1,117	1,299	2,370
6	936	1,134	1,311	2,553	1,071	1,326	1,542	2,814
7	1,084	1,313	1,518	2,956	1,240	1,535	1,785	3,258
8	1,232	1,492	1,725	3,359	1,409	1,744	2,028	3,702
9	1,380	1,671	1,932	3,762	1,578	1,953	2,271	4,146
10	1,528	1,850	2,139	4,165	1,747	2,162	2,514	4,590
11	1,676	2,029	2,346	4,568	1,916	2,371	2,757	5,034

### Long duration courses: 12 weeks or more

	Guanajuato, Oaxaca, Puerto Vallarta				Playa del Carmen			
	Part time 15	Intensive 20	Super intensive 25	Best of Both 15+10	Part time 15	Intensive 20	Super intensive 25	Best of Both 15+10
Extra week	+148	+179	+207	+403	+169	+209	+243	+444
12	1,824	2,208	2,553	4,971	2,085	2,580	3,000	5,478
16	2,416	2,924	3,381	6,583	2,761	3,416	3,972	7,254
20	3,008	3,640	4,209	8,195	3,437	4,252	4,944	9,030
24	3,600	4,356	5,037	9,807	4,113	5,088	5,916	10,806
32	4,784	5,788	6,693	13,031	5,465	6,760	7,860	14,358
40	5,968	7,220	8,349	16,255	6,817	8,432	9,804	17,910

- Best of Both course: 10 group classes + 15 one to one classes per week.
- In the exceptional case that only 1 or 2 students are enrolled in a course in the same level group, the number of classes per week will be reduced slightly.
- All special discount prices listed above are applicable when reserving uninterrupted weeks and the total cost of the program is paid for in full, in advance.

## Personalized and Executive Spanish Courses



### Executive Spanish classes

Weeks	Guanajuato, Oaxaca, Puerto Vallarta			Playa del Carmen		
	Executive 35 25+10	Executive 40 25+15	Executive 45 25+20	Executive 35 25+10	Executive 40 25+15	Executive 45 25+20
1	460	545	630	521	631	731
2	920	1,090	1,260	1,042	1,262	1,462
3	1,380	1,635	1,890	1,563	1,893	2,193
Extra	+414	+490	+567	+468	+567	+657

- Students in the Executive Personalized Spanish classes receive daily 2, 3 or 4 One to One classes in addition to the 5 hours of the Super intensive course.
- Maximum 6 students in the group course (8 in high season).

### One to One classes

Weeks	Guanajuato, Oaxaca, Puerto Vallarta			Playa del Carmen		
	10 classes	15 classes	20 classes	10 classes	15 classes	20 classes
1	230	315	400	250	360	460
2	460	630	800	500	720	920
3	690	945	1,200	750	1,080	1,380
extra	+207	+283	+360	+225	+324	+414

- Price per class: US\$ 25 (US\$ 28 in Playa del Carmen). Semi private (2 students in the same class): US\$ 20 (US\$ 22 in Playa del Carmen).

Mexico

2012

dates and prices



Spanish courses

## Specialized Spanish courses

All prices per person in US\$



### D.E.L.E. Exam: A1, A2



For those wishing to take the A1/2 exam there are no specific D.E.L.E. preparation classes. Instead we recommend that you follow 4 weeks of our Intensive course (along with some individual classes) in order to be prepared to take the exam.

### D.E.L.E. Preparation Courses/Exams: B1, B2, C1, C2

	Guanajuato		Start dates		
	B1 or B2	C1 or C2	Apr	Jul	Oct
4 weeks	776	995	30	30	15

**Required levels**  
 B1: B1 (intermediate)  
 B2: B2 (advanced)  
 C1: C1 (superior)  
 C2: C2 (mastery)  
 20 classes per week.

**Examination dates:**  
 May 25, August 24 and November 9.

- To enroll in a DELE course, you must have at least the same level of Spanish taught in the course.
- Exam fees are not included (approximate US\$ 94 for A1, US\$ 110 for A2, US\$ 134 for B1, US\$ 150 for B2, US\$ 158 for C1 and US\$ 166 for C2).
- To formally register for the exam, please send us a copy of your passport together with your personal details, permanent address and full payment at least 10 weeks before the exam date. The student's exam is not guaranteed unless the payment is done.

### Volunteer program

Guanajuato		Start dates
4 weeks Spanish	776	Any Monday
Placement fee	160	

**Required level:** Upon completing the Spanish course you must have a B1 level (intermediate).  
**Includes** 4-week Intensive Spanish, 4 weeks voluntary work (minimum).



### Christmas course

Guanajuato, Oaxaca, Puerto Vallarta		Start dates	
		Dec 2011	Dec 2012
1 week	199	19, 27	24, 31
2 weeks	398	19	24

**Required level:** All levels.  
 20 group classes of Spanish per week.

### Christmas course

Playa del Carmen		Start dates	
		Dec 2011	Dec 2012
1 week	233	19, 26	24, 31
2 weeks	466	19	24

**Required level:** All levels.  
 20 group classes of Spanish per week.

### Spanish for Business or Medical services

Guanajuato, Oaxaca, Puerto Vallarta		Start dates
1 week	439	Any Monday
2 weeks	878	
3 weeks	1,317	
extra week	+395	

**Required level:** All levels  
 25 classes per week: 15 group classes of Spanish + 10 one to one classes of Business or Medical Spanish.

### Spanish for Business or Medical services

Playa del Carmen		Start dates
1 week	485	Any Monday
2 weeks	970	
3 weeks	1,455	
extra week	+437	

**Required level:** All levels  
 25 classes per week: 15 group classes of Spanish + 10 one to one classes of Business or Medical Spanish.

### Teachers of Spanish

Guanajuato, Oaxaca, Puerto Vallarta		Start dates
2 weeks	924	Any Monday

**Required level:** Teacher of Spanish  
 10 group classes + 15 one to one per week.  
 Minimum 3 - Maximum 5 students.

### Teachers of Spanish

Playa del Carmen		Start dates
2 weeks	1,024	Any Monday

**Required level:** Teacher of Spanish  
 10 group classes + 15 one to one per week.  
 Minimum 3 - Maximum 5 students.





## Accommodation

All prices per person in US\$

### Home stay

#### Guanajuato

	individual	double
Breakfast	185	160
Half Board	210	185

#### Playa del Carmen

	individual	double
Breakfast	210	189
Half Board	238	210

- Includes meals, blankets, bed linen.
- Extra day: US\$ 45 in individual room, US\$ 35 in double room.

#### Oaxaca

	individual	double
Breakfast	185	160
Half Board	210	185

#### Puerto Vallarta

	individual	double
Breakfast	210	189
Half Board	238	210

- Double rooms in Oaxaca, Playa del Carmen and Puerto Vallarta only available for 2 students traveling together.

### Shared student apartment

#### Guanajuato

	individual	double
No meals	205	170

- Includes blankets, bed linen, access to fully equipped kitchen and laundry room, shared bathroom, shared tv, cleaning service once a week in communal areas, central heating, gas costs.
- Upon your arrival a deposit of US\$ 150 will be required. This deposit will be returned at the end of your stay provided there are no damages.
- Extra day: US\$ 45 in individual room, US\$ 35 in double room.
- Access to private bathroom at an additional cost on request and subject to availability per person/week: US\$ 110 in individual room, US\$ 65 in double room (in double room shared with your roommate).
- Triple rooms on request when reservation and arrival are shared (20% discount on the double room price per student).

### Student residence

#### Oaxaca, Playa del Carmen

	individual	double
Breakfast	280	224

- Includes bed linen, cleaning service in communal areas.
- Upon your arrival a deposit of US\$ 150 will be required. This deposit will be returned at the end of your stay provided there are no damages.
- Extra day: US\$ 40 in individual room, US\$ 32 in double room.



## Other services and fees

### Pick-up services

To	From	1 pers.	2 pers. <sup>(1)</sup>
Guanajuato	León airport	85	69
	Bus station	55	45
Playa del Carmen	Cancún airport	65	55
Oaxaca	Oaxaca airport	Free <sup>(2)</sup>	
Puerto Vallarta	Puerto Vallarta airport	Free <sup>(2)</sup>	

<sup>(1)</sup> When reservation, journey and arrival are shared.

<sup>(2)</sup> Included on arrival if home stay is booked.

### Additional services

Enrollment single fee	100
Study materials	45
Change of reservation each change you make in your reservation before and after arrival	175
Cancellation guarantee of the total invoice (nonrefundable and must be paid in full upon reservation)	5%
Private bathroom in shared student apartment, individual/double room per week	110/65
Placement per week when staying in accommodation without taking a course	75



### Argentina

#### Buenos Aires

- Maximum 6 students in the group classes
- 1 lesson = 55 minutes
- 10% discount on course prices of 8 weeks or longer
- Start dates any Monday, year round, all levels
- Enrollment fee: US\$ 100 (study materials included)
- Change of reservation fee: US\$ 175

#### Spanish courses

Intensive	20 group	190
One to One	20 one to one	375
Best of Both	20 group + 10 one to one	380
Pampas*	20 group + excursions	1,019

Note: If no group course is available at your level, 2 sessions of individual classes are offered instead. 50% discount for the second person in an individual class (2 students / 1 teacher). For individual classes on the weekend or after 8 pm, there is a 25% surcharge.

#### \*Pampas: Spanish on location

This program is available for all levels except for complete beginners and can only be booked in addition to a language course in Buenos Aires.

**Included:** Intensive course, accommodation in shared rooms (6 nights), all meals, daily activities, excursion to San Antonio de Areco, transportation (round trip).

#### Fixed departure dates:

29/1, 26/2, 25/3, 22/4, 20/5, 17/6, 15/7, 26/8, 16/9, 21/10, 18/11, 9/12.

Minimum 6 - Maximum 16 participants.

#### Volunteer program

A minimum 4-week Intensive course is required to be eligible for the Volunteer program. **Placement fee: US\$ 180**

Accommodation	individual	shared*
Home stay, half board	248	-
Residence, no meals	210	151

\*Shared rooms: 4-6 persons

- Extra night residence: US\$ 35 (individual room); US\$ 25 (shared room)
- Extra night home stay: US\$ 42

#### Airport pick-up service

Buenos Aires	60
--------------	----



#### Holidays

Jan	Feb	Mar	Apr	May	Jun	Jul	Aug	Sep	Oct	Nov	Dec
1	21, 22	24	2, 6	1, 25	20	9	20	-	8	-	8, 24*, 25, 31*

\*School will be closed after 2pm.

- Please check our web site for updated 2012 holidays: [www.donquijote.org/holidays](http://www.donquijote.org/holidays)
- There are no classes on holidays. The missed classes will be replaced by a special activity on the same day. Classes cannot be recuperated and are non-refundable.

### Argentina

#### Córdoba

- Maximum 7 students in the group classes
- 10% discount on the course price for long duration students (+10 weeks)
- Start dates any Monday, year round
- 1 lesson = 55 minutes
- Combine schools in Bariloche and Mendoza at no extra cost
- Enrollment fee: US\$ 100 (study materials included)
- Change of reservation fee: US\$ 175



#### Spanish courses

Intensive	20 group	155
Super intensive	30 group	210
One to One	10 one to one	280
Immersion	20 group + 5 one to one	265
Spanish + Tango/Salsa	20 group + 8 dance lessons	280

Note: The school reserves the right to change a group course into One to One in case there is no other student at the same level. If this happens, there will be a reduction of class hours of 50%.

#### Volunteer program

A minimum 4-week Intensive course is required to be eligible for the Volunteer program. **Placement fee: US\$ 270**

Accommodation	individual	double
Home stay, breakfast	165	110
Home stay, half board	215	160
Student residence, no meals	220	115

- No meals provided on Sundays in any type of accommodation.
- Private bathroom supplement (individual rooms only): US\$ 50 per week
- Extra night: US\$45

#### Airport pick-up service

Córdoba	55
---------	----

Pick-up service compulsory with arrival between 10 PM and 6 AM.

#### Holidays

Jan	Feb	Mar	Apr	May	Jun	Jul	Aug	Sep	Oct	Nov	Dec
1	20, 21	24	2, 6	1, 25	20	9	20	-	15	19	8, 25

- Please check our web site for updated 2012 holidays: [www.donquijote.org/holidays](http://www.donquijote.org/holidays)
- If there are two holidays during the same week, there will be an extra class to compensate for one of them.
- If there are individual classes on a holiday, there will always be an extra class in the same week to compensate for this.





## Spanish in Latin America

All prices per week/person in US\$ (except Cuba in €)

### Argentina

#### Bariloche, Mendoza

- Maximum 7 students in the group classes
- 10% discount on the course price for long duration students (+10 weeks)
- Start dates any Monday, year round
- 1 lesson = 55 minutes
- Combine with Córdoba at no extra cost
- Enrollment fee: US\$ 100 (study materials included)
- Change of reservation fee: US\$ 175

#### Spanish courses

Intensive	20 group	205
Super intensive	30 group	275
One to One	10 one to one	355
Immersion	20 group + 5 one to one	325
Spanish + Tango/Salsa <sup>(1)</sup>	20 group + 8 dance lessons	355

<sup>(1)</sup> Only available in Mendoza.

Note: The school reserves the right to change a group course into One to One in case there is no other student at the same level. If this happens, there will be a reduction of class hours of 50%.

#### Volunteer program

A minimum 4-week Intensive course is required to be eligible for the Volunteer program. **Placement fee: US\$ 380**

Accommodation	individual	double
Home stay, breakfast	215	160
Home stay, half board	285	225

- No meals provided on Sundays.
- Private bathroom supplement (individual rooms only) per person/week: US\$ 50
- Extra night: US\$45
- Double rooms only available for 2 students traveling together.
- High season supplements per person/week: Bariloche (from Jun 3 to Sep 30): US\$ 90; Mendoza (from Jan 29 to Mar 31 and from Jun 3 to Sep 30): US\$ 45

#### Airport pick-up service

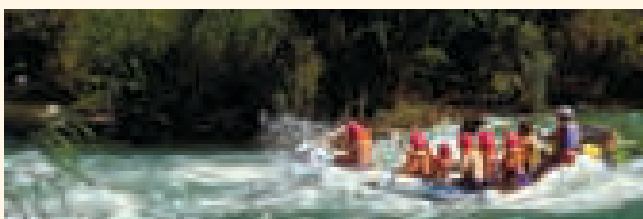
Bariloche, Mendoza	70
--------------------	----

Pick-up service compulsory with arrival between 10 PM and 6 AM.

#### Holidays

Jan	Feb	Mar	Apr	May	Jun	Jul	Aug	Sep	Oct	Nov	Dec
1	20, 21	24	2, 6	1, 25	20	9	20	-	15	19	8, 25

- Please check our web site for updated 2012 holidays: [www.donquijote.org/holidays](http://www.donquijote.org/holidays)
- If there are two holidays during the same week, there will be an extra class to compensate for one of them.
- If there are individual classes on a holiday, there will always be an extra class in the same week to compensate for this.



### Bolivia

#### Sucre

- Maximum 5 students in the group classes
- 1 lesson = 60 minutes
- Start dates any Monday, year round, all levels
- Enrollment fee: US\$ 100 (study materials included)
- Change of reservation fee: US\$ 175

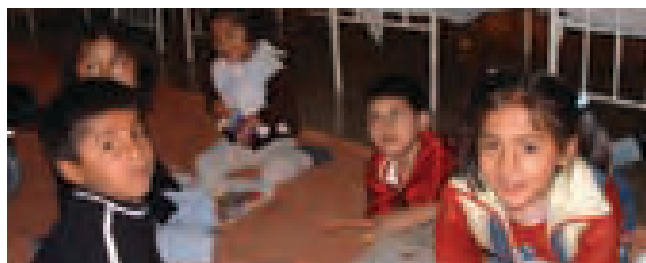


#### Spanish courses

Intensive	20 group	165
Super intensive 10	20 group + 10 one to one	290
One to One	20 one to one	255
Activa Group	20 group + 5 activities	435
Activa One to One	20 one to one + 5 activities	520

#### Volunteer program

A minimum 4-week Intensive course is required to be eligible for the Volunteer program. **Placement fee: US\$ 150**



Accommodation	individual	double
Home stay, half board	155	-
Student residence	155	109

- Extra night: US\$30 in any type of accommodation.
- Accommodation supplement during Volunteer Program: US\$ 45 per week

#### Airport pick-up service

Sucre	30
-------	----

#### Holidays

Jan	Feb	Mar	Apr	May	Jun	Jul	Aug	Sep	Oct	Nov	Dec
1	21, 22	-	5	1, 25	11	-	6	-	2	-	-

- Please check our web site for updated 2012 holidays: [www.donquijote.org/holidays](http://www.donquijote.org/holidays)
- There are no classes on holidays.
- The school will close for Christmas from December 17 to January 1, 2013.





### Costa Rica

#### Flamingo Beach, Heredia, Monteverde

- Maximum 4 students in the group classes
- 1 lesson = 55 minutes
- Start dates any Monday, year round
- Enrollment fee: US\$ 100 (study materials included)
- Change of reservation fee: US\$ 175

Spanish courses		1	2	3	4	extra
Intensive	20 group	360	720	1,020	1,320	330
Super intensive	27,5 group	495	990	1,410	1,820	455
One to One	20 one to one	490	980	1,470	1,960	490

<sup>(1)</sup> When reserving less than 20 weekly classes the price per class will be US\$ 30. Minor fee (14 to 17 years old): US\$ 229

Accommodation	individual	double
Home stay, half board	150	-
Dormitory		
Flamingo Beach, no meals	325	229
Heredia / Monteverde	295	195
Private apartment/studio (1-2 pers.)		
Flamingo Beach	489	
Heredia / Monteverde	455	

- Double rooms only available for two students traveling together.
- Extra night: US\$ 22 (in home stay); US\$ 40 (dormitory); US\$ 60 (private apartment)

#### Volunteer program

A minimum 4-week Intensive course is required to be eligible for the Volunteer program. **Placement fee: US\$ 150**

#### Airport pick-up service

Heredia	free <sup>(1)</sup>
Flamingo Beach / Monteverde	100

<sup>(1)</sup> When arriving on Sunday and if accommodation is booked.

- Pick-up package Juan Santamaria airport: arriving on Saturday in San José, 1 night in hostel with breakfast, individual room in San Joaquin de Flores and transportation to Flamingo Beach or Monteverde.
- Extra night at the hostel: US\$ 50.
- Pick-up package Liberia airport: arriving in Guanacaste to Flamingo campus.

#### Holidays

Jan	Feb	Mar	Apr	May	Jun	Jul	Aug	Sep	Oct	Nov	Dec
1	-	-	5, 6, 11	1	-	25	15	-	-	-	25

- Please check our web site for updated 2012 holidays: [www.donquijote.org/holidays](http://www.donquijote.org/holidays)
- Heredia school is open all year round. Flamingo Beach school will close for Christmas: from Dec 24 - 28, 2012. Monteverde school will close for Christmas: from Dec 17 - 21, 2012.

### Costa Rica

#### Coronado, Playa Jacó

- Maximum 5 students in the group classes
- 1 lesson = 50 minutes
- Start dates any Monday, year round, all levels
- Enrollment fee: US\$ 100 (study materials included)
- Change of reservation fee: US\$ 175



Spanish courses		Coronado	Playa Jacó
Intensive	20 group	269	355
One to One	10 one to one	265	265

Accommodation	Coronado		Playa Jacó	
	individual	double	individual	double
Home stay, half board	165	139	185	149
Student eco- residence, no meals	155	119	-	-
Shared student apartment, no meals	-	-	209	155

- Private bathroom supplement (in home stay Coronado) per week/person: US\$50 (individual); US\$ 28 (double)
- Extra night: US\$ 30
- Double rooms only available for 2 students traveling together.

#### Volunteer program

A minimum 4-week Intensive course is required to be eligible for the Volunteer program. Only available in Coronado. **Placement fee: US\$ 175**

#### Airport pick-up service

Coronado	40
Playa Jacó <sup>(1)</sup>	115

<sup>(1)</sup> Available only when arriving from 6 AM to 7 PM.

#### Holidays

Jan	Feb	Mar	Apr	May	Jun	Jul	Aug	Sep	Oct	Nov	Dec
1	-	-	5, 6, 11	1	-	25	2, 15	-	12	-	25

- Please check our web site for updated 2012 holidays: [www.donquijote.org/holidays](http://www.donquijote.org/holidays)
- All schools are closed from December 22 - January 4, 2013





## Spanish in Latin America

All prices per week/person in US\$ (except Cuba in €)

### Chile

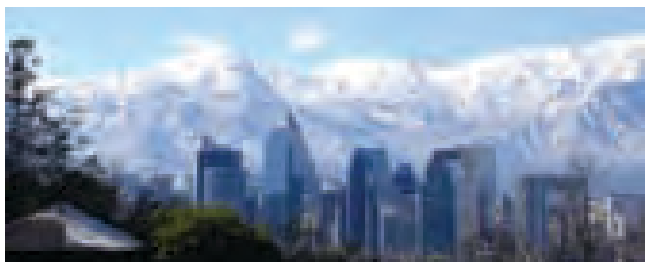
#### Santiago de Chile

- Maximum 8 students in the group classes
- 10% discount on the course price for long duration students (+10 weeks)
- 1 lesson = 55 minutes
- Enrollment fee: US\$ 100 (study materials included)
- Change of reservation fee: US\$ 175

#### Spanish courses

Intensive	20 group	195
Super intensive	30 group	275
One to One	10 one to one	355
Immersion	20 group + 5 one to one	325
Spanish + Salsa	20 group + 8 dance lessons	355

Note: The school reserves the right to change a group course into One to One in case there is no other student at the same level. If this happens, there will be a reduction of class hours of 50%.



#### Volunteer program

A minimum 4-week Intensive course is required to be eligible for the Volunteer program. Placement fee: US\$ 340

Accommodation	individual	double
Home stay, breakfast	195	145
Home stay, half board	259	205
Student residence, no meals	210	130

- No meals provided on Sundays in any type of accommodation.
- Extra night: US\$45
- Private bathroom supplement (individual rooms only) per person/week: US\$ 50

#### Airport pick-up service

Santiago de Chile 70

- Pick-up service compulsory with arrival between 10 PM and 6 AM.

#### Holidays

Jan	Feb	Mar	Apr	May	Jun	Jul	Aug	Sep	Oct	Nov	Dec
1	-	-	6, 7	1, 21	-	2, 16	15	17, 18, 19	15, 28	1, 2	8, 25

- Please check our web site for updated 2012 holidays: [www.donquijote.org/holidays](http://www.donquijote.org/holidays)
- If there are two holidays during the same week, there will be an extra class to compensate for one of them.
- If there are individual classes on a holiday, there will always be an extra class in the same week to compensate for this.

### Cuba

#### Havana, Santiago de Cuba, Trinidad

- Maximum 3 students in the group classes
- 1 lesson = 50 minutes
- Start dates any Monday, year round, all levels
- Enrollment fee: €100 (study materials included)
- Change of reservation fee: €125

#### Spanish courses

		1	2	3	4	extra
Intensive	20 group	-	395	505	615	109
Super intensive 5	20 group + 5 one to one	-	469	609	755	145
Super intensive 10	20 group + 10 one to one	-	535	709	885	175
One to One	20 one to one	299	439	579	715	139
Dance	5 dance lessons	72	144	216	288	72
Music	5 music lessons	90	180	270	360	90

- The school reserves the right to change a group course into One to One in case there is no other student at the same level. If this happens, there will be a reduction of class hours of 25%.
- Dance and Music course can only be booked in addition to a language course.
- If enrollment is done for 2 cities, prices are calculated separately.

#### Accommodation

	1	2	3	4	extra
Home stay, half board, individual room	285	615	949	1,279	335
Home stay, half board, double room	205	445	685	925	239

- Home stay weekly private bathroom supplement: €50 (individual room).
- Extra night: €45 (individual room), €35 (double room).
- Double rooms only available for 2 students traveling together.

#### Airport pick-up service

Havana	45
Santiago de Cuba	25
Trinidad	15

#### Holidays

Jan	Feb	Mar	Apr	May	Jun	Jul	Aug	Sep	Oct	Nov	Dec
1	-	8	-	1	-	26	-	-	-	-	25

- Please check our web site for updated 2012 holidays: [www.donquijote.org/holidays](http://www.donquijote.org/holidays)
- There are no classes on holidays.





All prices per week/person in US\$ (except Cuba in €)

### Dominican Republic

#### Santo Domingo, Sosua

- Maximum 7 students in the group classes
- 1 lesson = 45 minutes
- Start dates any Monday, year round, all levels<sup>(1)</sup>
- Long period discount (+9 weeks): 10% off the course and accommodation (except hotel)
- Enrollment fee: US\$ 100 (study materials included)
- Change of reservation fee: US\$ 175

Spanish courses		1	2	3	4	extra
Intensive	20 group	255	465	675	879	209
Super intensive	30 group	365	685	985	1,289	305
One to One	20 one to one	385	715	1,039	1,365	325

<sup>(1)</sup>Beginners: 2/1, 16/1, 30/1, 13/2, 28/2, 12/3, 26/3, 9/4, 23/4, 7/5, 21/5, 4/6, 18/6, 2/7, 16/7, 30/7, 13/8, 27/8, 10/9, 25/9, 8/10, 22/10, 5/11, 19/11, 3/12, 17/12, 31/12.

Accommodation		1	2	3	4	extra
<b>Santo Domingo</b>						
Home stay, half board		295	575	869	1,169	299
School apartment, self catering		215	455	685	915	235
Apart-hotel <sup>(1)</sup> , self catering		469	975	1,475	1,979	505
Middle-class hotel <sup>(1)</sup> , breakfast		615	1,285	1,955	2,629	675
<b>Sosua</b>						
School Apartment, breakfast <sup>(2)</sup>		215	399	599	805	205
Middle-class hotel <sup>(1)</sup> , breakfast		539	1,139	1,755	2,365	615
School Studio <sup>(3)</sup> , breakfast <sup>(2)</sup>		215	399	599	805	205
<b>Cabarete<sup>(4)</sup></b>						
2-star studio hotel <sup>(1)</sup> , breakfast		275	565	855	1,139	289

- <sup>(1)</sup> 20% high season supplement (Dec 15, 2012 - Jan 5, 2013) when staying in these hotels.
- <sup>(2)</sup> No breakfast provided on Sundays and on national holidays.
- <sup>(3)</sup> No kitchen available in the school studio.
- <sup>(4)</sup> Only available for Sosua students.
- Extra night: US\$ 75 in any type of accommodation (except Middle-class hotel: US\$ 80).
- Prices are based on individual rooms. Double rooms are available on request and only for 2 students traveling together: 25% discount on the individual room price.

#### Airport pick-up service

Santo Domingo	45
Sosua	35

#### Holidays

Jan	Feb	Mar	Apr	May	Jun	Jul	Aug	Sep	Oct	Nov	Dec
1, 21	27	-	6	1	-	-	-	24	-	-	25

- Please check our web site for updated 2012 holidays: [www.donquijote.org/holidays](http://www.donquijote.org/holidays)
- There are no classes on holidays.

### Ecuador

#### Quito

- Maximum 5 students in the group classes
- 1 lesson = 60 minutes
- Start dates any Monday, year round, all levels
- Enrollment fee: US\$ 100 (study materials included)
- Change of reservation fee: US\$ 175



#### Spanish courses

Intensive	20 group	165
Super intensive	20 group + 10 one to one	290
One to One	20 one to one	255
Activa Group	20 group + 5 activities	435
Activa One to One	20 one to one + 5 activities	520

Note: The school reserves the right to change a group course into One to One in case there is no other student at the same level. If this happens, there will be a reduction of class hours of 50%.

#### Volunteer program

A minimum 4-week Intensive course is required to be eligible for the Volunteer program. Placement fee: US\$ 150

Accommodation	individual	double
Home stay, half board	155	-
Student residence	139	95

- Extra night: US\$ 30 in any type of accommodation.
- Accommodation supplement during Volunteer Program: US\$ 45 per week

#### Airport pick-up service

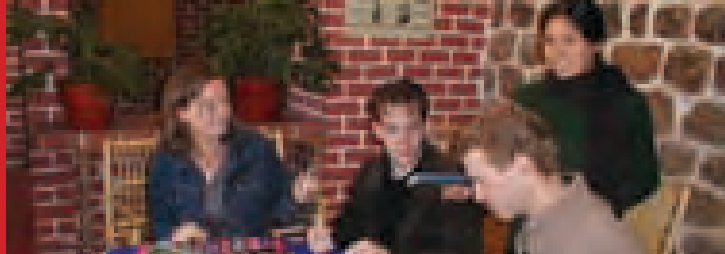
Quito	30
-------	----

#### Holidays

Jan	Feb	Mar	Apr	May	Jun	Jul	Aug	Sep	Oct	Nov	Dec
1	21, 22	-	5	1, 24	-	-	10	-	9	2, 3	6, 25, 31

- Please check our web site for updated 2012 holidays: [www.donquijote.org/holidays](http://www.donquijote.org/holidays)
- There are no classes on holidays.
- The school will close for Christmas from December 17 to Jan 1, 2013.





## Spanish in Latin America

All prices per week/person in US\$ (except Cuba in €)

### Guatemala

#### Antigua

- Maximum 5 students in the group classes
- 1 lesson = 55 minutes
- 10% discount on the course price for long duration students (+10 weeks)
- Start dates any Monday, year round, all levels
- Enrollment fee: US\$ 100 (study materials included)
- Change of reservation fee: US\$ 175

#### Spanish courses

Intensive	20 group	140
Super intensive	20 group + 10 one to one	215
One to One	20 one to one	215
Immersion	30 one to one	270
Spanish + Salsa	20 group + 8 salsa	320

Note: The school reserves the right to change a group course into One to One in case there is no other student at the same level. If this happens, there will be a reduction of class hours of 50%.

#### Volunteer program

A minimum 4-week Intensive course is required to be eligible for the Volunteer program. **Placement fee: US\$ 260**

Accommodation	individual	double
Home stay, full board	120	-
Student residence, no meals	135	100
Student residence, full board	175	135

- No meals provided on Sundays in any type of accommodation.
- Private bathroom supplement per person/week: US\$ 30
- Extra night: US\$ 30
- Double rooms only available for 2 students traveling together.

#### Airport pick-up service

Antigua	55
---------	----

- Pick-up service compulsory with arrival between 10 PM and 6 AM.

#### Holidays

Jan	Feb	Mar	Apr	May	Jun	Jul	Aug	Sep	Oct	Nov	Dec
1	-	-	5, 6	1	25, 30	25	-	15	20	1	24*, 25

- Please check our web site for updated 2012 holidays: [www.donquijote.org/holidays](http://www.donquijote.org/holidays)
- There are no classes on holidays.



### Peru

#### Cusco

- Maximum 6 students in the group classes
- 1 lesson = 55 minutes
- 10% discount on course prices of 8 weeks or longer
- Start dates any Monday, year round, all levels
- Enrollment fee: US\$ 100 (study materials included)
- Change of reservation fee: US\$ 175

#### Spanish courses

Intensive	20 group	127
One to One	20 one to one	205
Best of Both +10	20 group + 10 one to one	250
Tambopata*	20 group + excursions	825

Note: If no group course is available at your level, 2 sessions of individual classes are offered instead. 50% discount for the second person in an individual class (2 students / 1 teacher). For individual classes on the weekend or after 8pm, there is a 25% surcharge.

#### \*Tambopata: Spanish on location

This program is available for all levels except for complete beginners and can only be booked in addition to a language course in Cusco. Minimum 6 - Maximum 16 participants. Fixed departure dates: 6/5, 10/6, 1/7, 22/7, 9/9, 7/10, 4/11.

**Included:** Intensive course, accommodation in shared rooms (6 nights), all meals, daily excursions with a professional rainforest guide, transportation to Tambopata (roundtrip) by boat and from Puerto Maldonado airport.

**Not Included:** Airfare Cusco - Puerto Maldonado - Cusco (approx. \$ 165 + \$ 7 airport tax; to be paid directly to the school upon arrival).

#### Volunteer program

A minimum 4-week Intensive course is required to be eligible for the Volunteer program. **Placement fee: US\$ 105**

Accommodation	individual	double
Home stay, half board	148	-
Residence, half board	210	148

- Extra night: US\$ 35 (individual room); US\$ 25 (double room)

#### Airport pick-up service

Lima <sup>(1)</sup>	245
Cusco	free

<sup>(1)</sup> Pick-up package Lima airport includes: transfer Lima airport, overnight stay in a 2 star hotel, one way flight to Cusco. Please note that domestic flights do not include airport tax and that flight prices are always subject to change.

#### Holidays

Jan	Feb	Mar	Apr	May	Jun	Jul	Aug	Sep	Oct	Nov	Dec
1	-	-	6	1	7, 24	28	-	-	8	1	8, 24*, 25, 31*

\*School will be closed after 2pm.

- Please check our web site for updated 2012 holidays: [www.donquijote.org/holidays](http://www.donquijote.org/holidays)
- There are no classes on national holidays. The missed classes will be replaced by a special activity on the same day. Classes cannot be recuperated and are non-refundable.

please send this enrollment form (2 pages) to:

Calle Placentinos 2, 37008 Salamanca, Spain

Tel.: +34 923 26 60 40

Email: infocentral@donquijote.org

Fax: +34 923 26 88 15

Enrollment form  
[www.donquijote.org](http://www.donquijote.org)

**PERSONAL DETAILS**

Surname .....

First name ..... Sex  F  M

Address .....

City..... Postal code.....

Country..... Nationality.....

Passport N°..... Tel. home.....

Mobile..... Fax.....

E-mail..... Date of birth (dd/mm/yy).....

2nd address and phone number we should contact in case of emergency:  Partner  Parents  Other .....

**YOUR LEVEL OF SPANISH** (test your level at [www.donquijote.org/spanishlanguage/test](http://www.donquijote.org/spanishlanguage/test))

A1 (101):Beginner (absolute)  B1 (201-202):Intermediate  C1 (401-402):Superior

A2 (102):Beginner  B2 (301-302):Advanced  C2 (411-412):Mastery

Please indicate name, address, phone number and e-mail of your Spanish teacher and institution where you have studied Spanish:

.....

**HOW DID YOU HEAR ABOUT DON QUIJOTE FOR THE FIRST TIME?**

Friend  University / School  Government institution  www.donquijote.org  Link

Travel Agency  Fair  Advertisement  Search engine  Other

Please specify who, which or where of the option you have chosen: .....

**SELECTED COURSE(S) AND DESTINATION(S)**

Course	Destination	Classes/week	Nº of weeks	From (dd/mm/yy)	To (dd/mm/yy)
1º .....					
2º .....					
3º .....					

**SPAIN ALL YEAR ROUND ADULT COURSES**

- Alicante  Madrid  Salamanca
- Barcelona  Malaga  Seville
- Cadiz  Marbella  Tenerife
- Granada  Pamplona  Valencia

**MEXICO ALL YEAR ROUND ADULT COURSES**

- Guanajuato
- Oaxaca
- Playa del Carmen
- Puerto Vallarta

**SUMMER CAMPS AND TEEN PROGRAMS IN SPAIN**

- Barcelona  Salamanca
- Granada  Seville
- Madrid  Valencia
- Marbella - .....  Other .....

**LATIN AMERICA ALL YEAR ROUND ADULT COURSES**

- Buenos Aires (Argentina)  Sucre (Bolivia)  Heredia (Costa Rica)  Santiago de Cuba (Cuba)  Quito (Ecuador)
- Bariloche (Argentina)  Santiago de Chile (Chile)  Monteverde (Costa Rica)  Trinidad (Cuba)  Antigua (Guatemala)
- Córdoba (Argentina)  Coronado (Costa Rica)  Playa Jacó (Costa Rica)  Santo Domingo (Dominican Rep.)  Cuzco (Peru)
- Mendoza (Argentina)  Flamingo Beach (Costa Rica)  Havana (Cuba)  Sosua (Dominican Rep.)  Other .....

# Enrollment form

## SELECTED ACCOMMODATION

<b>TYPE OF ACCOMMODATION</b>		<b>CATEGORY</b>	<b>ROOM OPTIONS</b>	<b>MEAL OPTIONS</b>
<input type="checkbox"/> Home Stay	<input type="checkbox"/> Other student residence	<input type="checkbox"/> Standard	<input type="checkbox"/> Individual room	<input type="checkbox"/> Apart./Studio 1-2 persons
<input type="checkbox"/> Shared student apartment	<input type="checkbox"/> Private apartment	<input type="checkbox"/> Premium	<input type="checkbox"/> Double room	<input type="checkbox"/> Apart./Studio 3-4 persons
<input type="checkbox"/> don Quijote residence	<input type="checkbox"/> Other .....	<input type="checkbox"/> Other .....	<input type="checkbox"/> Triple room	<input type="checkbox"/> Other .....
			<input type="checkbox"/> Other .....	<input type="checkbox"/> No meals
				<input type="checkbox"/> Breakfast
				<input type="checkbox"/> Half board
				<input type="checkbox"/> Full board

FROM (DD/MM/YY)	TO (DD/MM/YY)	Nº OF WEEKS	TYPE OF ACCOMMODATION	DESTINATION
1º .....				
2º .....				
3º .....				

Smoking       Non-smoking (only in home stay)       Private bathroom (at an additional cost)

Dietary requirements (only in home stay) .....

Allergies (only in home stay) .....

Other / Extra wishes (we will do all we can to comply with your preferences although we cannot guarantee them):

.....

## PICK-UP SERVICES (at an additional cost)

Arriving at  Airport  Bus station  Train station      Arrival date ..... Arrival time .....

Flight nº ..... Arrival city ..... Going to (city) .....

<b>SPAIN</b> <input type="checkbox"/> Alicante <input type="checkbox"/> Madrid <input type="checkbox"/> Salamanca <input type="checkbox"/> Barcelona <input type="checkbox"/> Malaga <input type="checkbox"/> Seville <input type="checkbox"/> Cadiz <input type="checkbox"/> Marbella <input type="checkbox"/> Tenerife <input type="checkbox"/> Granada <input type="checkbox"/> Pamplona <input type="checkbox"/> Valencia	<b>SUMMER CAMP BUS TO AND FROM</b> <input type="checkbox"/> Granada <input type="checkbox"/> Seville <input type="checkbox"/> Marbella <input type="checkbox"/> Valencia <input type="checkbox"/> Salamanca	<b>MEXICO</b> <input type="checkbox"/> Guanajuato <input type="checkbox"/> Oaxaca <input type="checkbox"/> Playa del Carmen <input type="checkbox"/> Puerto Vallarta	<b>LATIN AMERICA</b> <input type="checkbox"/> Argentina <input type="checkbox"/> Dominican Rep. <input type="checkbox"/> Bolivia <input type="checkbox"/> Ecuador <input type="checkbox"/> Chile <input type="checkbox"/> Guatemala <input type="checkbox"/> Costa Rica <input type="checkbox"/> Peru <input type="checkbox"/> Cuba
-------------------------------------------------------------------------------------------------------------------------------------------------------------------------------------------------------------------------------------------------------------------------------------------------------------------------------------------------------------------------------------------------------------------------------------------	----------------------------------------------------------------------------------------------------------------------------------------------------------------------------------------------------------------------	----------------------------------------------------------------------------------------------------------------------------------------------------------------------------------	----------------------------------------------------------------------------------------------------------------------------------------------------------------------------------------------------------------------------------------------------------------------------------------------------------------------------------------------------

## OTHER SERVICES

- Do you want to be able to cancel for reasons mentioned in section 9 of the General Conditions (see page 23)?  Yes  No  
The cost of this **cancellation guarantee** is 5% of the total sum of the invoice (non-refundable) and has to be paid in full upon reservation.
- Do you want to take out our **medical insurance** (only available for courses in Spain) mentioned in section 4.1 of the General Conditions (see page 23)?  Yes  No  
Cost per 4 weeks or less: €60
- Do you require an **invitation letter**? (Can only be sent if the total cost of the program has been paid.)  Yes  No  Express courier (€110)  Regular post (free)

## AGREEMENT

Yes, I have read and agree with the don Quijote Terms and Conditions (mentioned on page 23) and have paid the advance payment of €500 (for courses in Spain and Cuba) or US\$700 (for courses in Latin America) by:

Mastercard       Visa       Bank transfer

**Bank name:** BANKINTER

**Branch address:** Calle Marques de Urquijo 11, 28008 Madrid

**Swift code:** BKBKESMMXXX

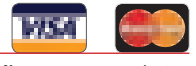
<b>€ account</b>	<b>US\$ account</b>
<b>Account nr:</b> 0128-0023-19-0500006124	<b>Account nr:</b> 0128-0023-12-0140001941
<b>IBAN:</b> ES25 0128 0023 1905 0000 6124	<b>IBAN:</b> ES62 0128 0023 1201 4000 1941

If the enrollment has taken place within 2 weeks prior to course start date the total fee will be paid immediately upon receipt of the reservation invoice (for the Kids, Juniors and Teens program the total fee must be paid 4 weeks prior to arrival).

Date .....

Signature .....

## CREDIT CARD PAYMENT



- You can pay by credit card through our **secure online payment** web site <https://secure.donquijote.org/payment/>
- Or you can fill this out and send us by fax (+34 923 26 06 51) or scanned by email. I hereby authorize don Quijote to deduct the amount stated below from my credit card.

Name of holder .....

ID / Passport of holder .....

Credit card nº .....

Expiry date (mm/yy) .....

ID credit card security number on the back .....

Total amount enclosed or authorized for charge .....

Authorized signature .....

# General Conditions

For all don Quijote courses and services. Partner schools may have additional conditions.

## 1. GENERAL

- 1.1 don Quijote accepts no responsibility whatsoever for cases of force majeure (according to law) or for students' actions.
- 1.2 The don Quijote management reserves the right to accept students aged 17 in exceptional cases.
- 1.3 On formalizing enrollment in a course (and accommodation) over the internet, by fax, online booking or in writing, students must accept the General and Payment Conditions and Payment Method, as well as the norms, rules and guarantees of don Quijote that they have previously been given and read.

## 2. CLASSES

- 2.1 In **high season** some classes may be given in classrooms outside of our installations.
- 2.2 don Quijote's management reserves the right to extend the timetable for classes to 9 p.m.
- 2.3 don Quijote's management reserves the right in the exceptional case that only 1 or 2 students are enrolled in a course in the same level group, the number of classes per week will be reduced slightly.

## 3. ACCOMMODATION

- 3.1 The student will be charged for the replacement of broken items due to either negligence or by intention.
- 3.2 If there is damage and no one is directly responsible, we will divide the cost of repairs among all the students in the apartment or residence.
- 3.3 In the case of a serious disciplinary offence, repeated bad behavior, the student will be expelled from the accommodation contracted with don Quijote without the right to any refund.
- 3.4 In **high season** the apartments and student residences may be substituted by another type of accommodation at a corresponding price.

## 4. INSURANCE

- 4.1 Medical: we advise all citizens of the EU to bring the European Health Insurance Card EHIC (formerly the E111 document). If you require medical treatment, with this card and the medical bill you will be able to reclaim the medical expenses from your country of origin. We recommend that students from other countries take out a medical insurance policy provided by don Quijote that guarantees coverage for the illnesses stipulated on the above mentioned policy.
- 4.2 Civil Liability: don Quijote has an accident and civil liability insurance policy that covers possible incidents or minor accidents that may occur within its centers. don Quijote is not responsible for the loss or theft of students' personal property, for which we recommend you take out your own insurance policy.

## 5. VISA

- Students from western Europe do not require a visa to enter Spain or Latin America. Students from other countries must enquire about obtaining a visa at the Spanish or Latin American embassies or consulates closest to them. The certificate certifying enrollment (invitation letter) can ONLY be issued by the school when the enrollment form and a copy of the passport have been received and a deposit has been made of €2,000 (for courses in Spain and Cuba) or US\$3,000 (for courses in Latin America). Not applicable for citizens of the US, Canada, Brazil, China, Japan, Korea, Australia, New Zealand, Russia, Turkey, South Africa.

## 6. ADMISSION OR EXPULSION

- 6.1 don Quijote reserves the right to cancel the student's place if on the day of their arrival they or their agency have not paid the total sum of the course, accommodation and other services contracted.
- 6.2 In the case of a serious disciplinary offence, repeated bad behavior or infringement of the laws of the country in which the course is taking place, the student will be expelled from the school and accommodation contracted with don Quijote without the right to any refund.
- 6.3 In the case where damages are caused to third parties, all the expenses claimed from don Quijote that originate from the above-mentioned incident will be charged to the student, who will have no right to later claims.

## 7. LAST-MINUTE RESERVATIONS, CHANGES AND ACCEPTANCE

- 7.1 The advance payment for confirmation of the reservation will be €500 (for courses in Spain and Cuba) and US\$700 (for courses in Latin America).
- 7.2 For the confirmation of reservations made 2 weeks or less before arrival (for Kids, Juniors and Teens programs 4 weeks or less), the total invoice must be paid in full at the time of enrollment.
- 7.3 €125 (Spain and Cuba)/US\$ 175 will be charged for administrative costs for changes to your confirmed reservation, before or after arrival (subject to availability).

## 8. COURSE REDUCTIONS AND CANCELLATIONS

- 8.1 Cancellations before arrival will only be accepted in writing (letter, telegram, e-mail or fax). Written evidence of the cancellation is required and therefore cancellations made by telephone will not be deemed valid.
- 8.2 For cancellations prior to the last two weeks before arrival, there will be a penalty of €250 (Spain and Cuba), US\$350 (Latin America) of the advance payment.
- 8.3 For cancellations in the last two weeks before arrival the advance payment of €500 (Spain and Cuba), US\$700 (Latin America) will not be refunded.
- 8.4 For the Spanish + Paid Job Program (page 5) there will be an additional cancellation fee of €180 for cancellations made 2 weeks before arrival. For cancellations in the last two weeks before arrival, we will charge the whole program price.

- 8.5 For the Kids, Juniors and Teens programs (page 8) the penalty will be €1000 for cancellations made 4 weeks before arrival. For cancellations prior to the last four weeks before arrival, there will be a penalty of €250.
- 8.6 In no case whatsoever will money for the course/accommodation be refunded once the course has started (except in the case of the refund guarantee).
- 8.7 For all reimbursements an administrative fee of 10% of the amount to be refunded will be charged (a minimum of €55/US\$95) to cover the administrative costs of returning your money, as well as the standard fee for changes in the reservation (€125/US\$ 175).
- 8.8 Students who require any type of student visa for their course and have to cancel their course must send an official original certified document directly from the Embassy.
- 8.9 For students who have visas, cancellations will only be considered once the student provides proof of leaving the country and once the visa obtained through don Quijote is no longer valid. In addition, the cancellation will only be valid on the student's return to their country of origin.
- 8.10 Refunds must be requested during the 30 days following the completion of the course or cancellation. Once this period is complete, the students no longer has the right to request any refunds.
- 8.11 Any refunds will be made in the 45 day period following the request by bank transfer to the bank account of the student or to the account from where the payment has been made (not valid any other account or person).
- 8.12 In the event of a cancellation or course reduction, original prices will be applied whether or not the student has opted for a special discount or promotion. For example if on booking the course the student received a discount due to the length of the course, this will be lost on cancellation.
- 8.13 For cancellations after a Visa is issued the penalty will be minimum €1,500/ US\$2,200 (not applicable for citizens of the US, Canada, Brazil, China, Japan, Korea, Australia, New Zealand, Russia, Turkey, South Africa).

## 9. CANCELLATION GUARANTEE

- 9.1 We recommend our special cancellation guarantee if you are taking a course that is longer than 2 weeks. The cost of this guarantee is 5% of the total sum of the full program invoice (non-refundable) and the cancellation guarantee has to be paid in full upon reservation in order for it to be valid.
- 9.2 When a cancellation is made and you need to use the cancellation guarantee, we will refund the cost of your course and tuition, accommodation and some extras if you cancel your course at any time from the day of enrollment until the end of your course. Your guaranteed refund will NOT include: your enrollment fee, the cost of one week (course, accommodation) and services already used at the time of cancellation, the cost of the guarantee itself, your travel costs and an administrative fee of 10% of the amount to be refunded to cover the administrative costs of returning your money.
- 9.3 For Premium courses, the refund process is slightly different and we will not penalize you with the cost of 1 week of services (course, accommodation) as detailed in 9.2. If the accommodation reserved was a shared or private student apartment, the student is required to pay 100%.
- 9.4 This guarantee is personal and non-transferable and will be applicable to the following cases: work, examination, proven illness by Spanish doctor of the student following their arrival in Spain, pregnancy or the obligation of doing military service.
- 9.5 The time period covered by this guarantee is from the day of enrollment until the finalization of the course and accommodation with don Quijote.
- 9.6 For a full refund of this amount an official original document verifying the reason for the cancellation will be required within the following 10 days of the cancellation. These documents have to be sent by post or courier to the don Quijote booking department and don Quijote will forward these original documents to the appropriate office. You will also have to fill in the form, you can find at [www.idealeducationgroup.com/contactus](http://www.idealeducationgroup.com/contactus)
- 9.7 The refund will be made in the next 45 days after the examination of all documents by bank transfer to the bank account of the student or to the account from where the payment has been made (not valid any other account or person).
- 9.8 Not having obtained a visa is not an adequate reason for the cancellation guarantee to take effect.
- 9.9 If you have enrolled for a course that is over 5 weeks long and you use the cancellation guarantee, you should be aware that prices might change depending on how many weeks you'll be doing eventually. That is, if you enrolled for 12 weeks and unfortunately you need to reduce your course to 4 weeks, the 4 week prices will be applied.

## 10. CUSTOMER SERVICE

- 10.1. Notwithstanding the provisions of this agreement excluding any legal obligation or liability on its part, don Quijote will, in the event of a complaint by a student against an overseas body in connection with its preferred course or associated accommodation, endeavor to use its best means to rectify the situation of the student involved, provided that such a complaint is notified to the appropriate body abroad as soon as is reasonably possible, and that the student has exhausted all other feasible solutions in the overseas country involved.
- 10.2. Any complaints need to be given in writing and within the first 24 hours. Otherwise students will lose the right to any compensation, refund or changes. don Quijote will accept any suggestions after departure date or requests only on a information level and to improve our services.

## 11. COPYRIGHT

- The management of don Quijote reserves the right to use all possible photos taken during the student's stay unless the student declares otherwise on his arrival at the school.

## 12. CONTRACT

As mentioned in GENERAL 1.3, no signatures are necessary for the agreement. Any bookings or payments confirm the acceptance of the agreement with all these conditions.

## 13. HOLIDAYS

Please check our web site ([www.donquijote.org/holidays](http://www.donquijote.org/holidays)) for updated holidays as they may be subject to change before planning your trip to Spain (page 2). don Quijote is not obliged to refund or make up any classes missed due to National or Local holidays. In case of two holidays within one week (Monday to Friday), one day of the missed lessons will be recuperated except for One to One classes which will be recuperated in any case.

## 14. DISCOUNTS AND CREDIT NOTES

- 14.1 The Enrollment Fee is valid for one year from the first reservation made for don Quijote schools. In other words, any courses reserved during this year can be made using the same enrollment fee.
- 14.2 Discounts cannot be accumulated and all of them have a set duration period. They cannot be used in conjunction with one another and are only applicable when students are eligible for them when enrolling. Discounts that become available after the first enrollment are not valid.
- 14.3 Credit notes are only valid for up to 12 months (from your start date). Once this period of 12 months comes to an end, the students loses the right to them.

## 15. REFUNDS

- 15.1 Refer back to points 8 and 9 (cancellations).
- 15.2 Refunds can only be made and money can only be transferred to the student who booked the course. Refunds will never be made out to anyone other than the student or the tutor who paid for the reservation.

## 16. OFFERS

The published offers cannot be accumulated. All offers are subject to availability. There will be no changes made to bookings that have been received prior to the promotion. All offers and promotions will be applied at the time of booking.

## 17. PROTECTION OF PERSONAL DATA

In compliance with Spanish Law 15/1999, December 13, regarding the protection of personal data, don Quijote would like to inform you that your personal details within these general conditions will be stored in a database (whose liability and responsibility is don Quijote, S.L.), solely for the commercial and operative purposes of the company. By accepting these general conditions you give your consent to the above said treatment and for their use for the aforementioned purposes. At the same time, you have the right to request that we inform you of your rights to access, correct and cancel such information within the established terms of the prevailing legislation, by writing to the address: Calle Placentinos nº 2 - 37008-Salamanca - Spain.

## 18. PAYMENT CONDITIONS

- 18.1 The total sum (in Euros for courses in Spain and in US\$ for courses in Latin America) must be received at least 2 weeks before your arrival (for Kids, Juniors and Teens program 4 weeks). Without the full payment don Quijote can cancel the program, and the student has no right to a refund. Please put your name and 'don Quijote' on all documents relating to transfers.
- 18.2 All bank charges will be your responsibility. In the case whereby the bank charges us a commission for receipt of your payment, we reserve the right to charge you this sum on your arrival.
- 18.3 Personal cheques won't be accepted in any case. Bank cheques will be accepted only if the cheque is received a minimum of 80 days before arrival and with an extra fee of €35 / US\$50.
- 18.4 These prices are valid until the 31st of December 2012 for courses beginning and ending in the year 2012.
- 18.5 This price list overrules all previous information about prices and dates.
- 18.6 don Quijote is not responsible for printing errors that may appear or for errors in publications by third parties about don Quijote.

By bank transfer to don Quijote: BANKINTER  
C/ Marques de Urquijo 11, 28008 Madrid

€ account for courses in Spain and Cuba  
Account nr: 0128-0023-19-0500006124  
IBAN: ES25 0128 0023 1905 0000 6124  
Swift code: BKBKESMMXXX

US\$ account for courses in Latin America  
Account nr: 0128-0023-12-0140001941  
IBAN: ESK6 0128 0023 1201 4000 1941  
Swift code BKBKESMMXXX

By credit card:

1. You can pay by credit card through our secure online payment web site:  
<https://secure.donquijote.org/payment/>
2. Please contact us so that we can send you a letter of authorization.



# ¡don Quijote!



Accredited / Member of:



QUALITY | INNOVATION | PARTNERSHIP

**don Quijote UK**  
2/4 Stoneleigh Park Road  
Epsom KT 19 0QR  
United Kingdom  
**Tel.: +44 20 8786 8081**  
Fax: +44 20 8786 8086  
[dqk@donquijote.org](mailto:dqk@donquijote.org)

**don Quijote NEDERLAND**  
Graaf Florisstraat, 38  
3021 CH Rotterdam  
The Netherlands  
**Tel.: +31 10 476 35 33**  
Fax: +31 10 476 89 27  
[dqnl@donquijote.org](mailto:dqnl@donquijote.org)

**don Quijote USA**  
1500 Walnut Street STE 1306  
PA 19102-3514, Philadelphia  
**Toll free: 1-800-518-0412**  
Tel.: +34 923 26 88 74  
Fax: +34 923 26 06 74  
[ccusa@donquijote.org](mailto:ccusa@donquijote.org)

 **don Quijote**  
in-country Spanish language courses

**HEAD OFFICE SPAIN**  
Calle Placentinos 2, 37008 Salamanca, Spain

**Tel.: +34 923 26 88 60**  
Fax: +34 923 26 88 15

[infocentral@donquijote.org](mailto:infocentral@donquijote.org)  
[www.donquijote.org](http://www.donquijote.org)